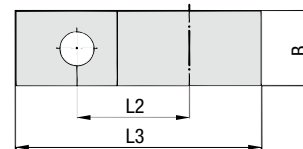
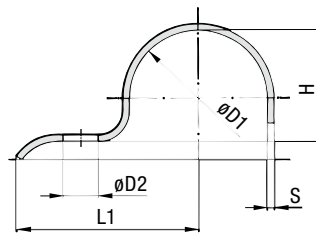


Light Saddle - Single-Ended Design



Order Codes

Light Saddle

DIN 1596-7*W66

* Light Saddle to DIN 1596

DIN 1596

* STAUFF Group (Ø D1)

-7

* Material code Carbon Steel, zinc-plated and thick-film passivated

W66

STAUFF Group	Diameter Range		Dimensions (mm/in)							
	Ø D1 (mm)	(in)	L1	L2	L3	H	D2	B	S	
7	5,5 ... 7	.2228	26	14	31,5	5	6,6	16	2	
			1.02	.55	1.24	.20	.26	.63	.08	
9	7 ... 9	.2835	28	16	34,5	6	6,6	16	2	
			1.10	.63	1.36	.24	.26	.63	.08	
13	9,5 ... 13	.3951	30	18	38,5	9	6,6	20	2	
			1.18	.71	1.52	.35	.26	.79	.08	
15,5	13 ... 15,5	.5161	32	20	41,75	12	6,6	20	2	
			1.26	.79	1.64	.47	.26	.79	.08	
19	15,5 ... 19	.6175	34	22	45,5	15	6,6	20	2	
			1.34	.87	1.79	.59	.26	.79	.08	
23	20 ... 23	.7991	43	28	57,5	19	9	25	3	
			1.69	1.10	2.26	.75	.35	.98	.12	
26	23 ... 26	.91 ... 1.02	44	29	60	22	9	25	3	
			1.73	1.14	2.36	.87	.35	.98	.12	
28,5	26 ... 28,5	1.02 ... 1.12	47	32	64,25	24	9	25	3	
			1.85	1.26	2.53	.94	.35	.98	.12	
31	28,5 ... 31	1.12 ... 1.22	47	32	65,5	27	9	25	3	
			1.85	1.26	2.58	1.06	.35	.98	.12	
33 *	31 ... 33	1.22 ... 1.30	56	36	75,5	29	9	25	3	
			2.20	1.42	2.97	1.14	.35	.98	.12	
36	33 ... 36	1.30 ... 1.42	57	40	78	32	11	30	3	
			2.24	1.57	3.07	1.26	.43	1.18	.12	
39	36 ... 39	1.42 ... 1.54	59	42	81,5	34	11	30	3	
			2.32	1.65	3.21	1.34	.43	1.18	.12	
43	39 ... 43	1.54 ... 1.69	61	44	85,5	38	11	30	3	
			2.40	1.73	3.37	1.50	.43	1.18	.12	
46	43 ... 46	1.69 ... 1.81	62	45	88	41	11	30	3	
			2.44	1.77	3.46	1.61	.43	1.18	.12	
49	46 ... 49	1.81 ... 1.93	67	48	95,5	44	14	40	4	
			2.64	1.89	3.76	1.73	.55	1.57	.16	
52 *	49 ... 52	1.93 ... 2.05	72	53	102	47	14	40	4	
			2.83	2.09	4.02	1.85	.55	1.57	.16	
58	53 ... 58	2.09 ... 2.28	76	55	107	52	14	40	4	
			2.99	2.17	4.21	2.05	.55	1.57	.16	
61	58 ... 61	2.28 ... 2.40	77	58	111,5	56	14	40	4	
			3.03	2.28	4.39	2.20	.55	1.57	.16	

* Similar to DIN 1596.

Alternative materials and surface finishings are available upon request. Consult STAUFF for further information.