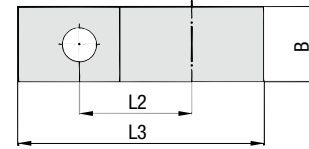
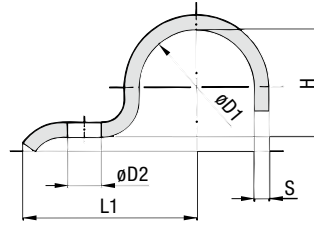


Heavy Saddle - Single-Ended Design



Order Codes

Heavy Saddle

DIN 1592-7*W66

* Heavy Saddle to DIN 1592

DIN 1592

* STAUFF Group (Ø D1)

-7

* Material code Carbon Steel, untreated

W1

Carbon Steel, zinc-plated
and thick-film passivated

W66

STAUFF Group	Diameter Range		Dimensions (mm/in)							
	Ø D1 (mm)	(in)	L1	L2	L3	H	D2	B	S	
7	5,5 ... 7	.2228	22	14	27,5	5	6,6	16	2	
			.87	.55	1.08	.20	.26	.63	.08	
9	7 ... 9	.2835	27	18	33,5	6	6,6	20	2	
			1.06	.71	1.32	.24	.26	.79	.08	
13	9,5 ... 13	.3951	40	25	49,5	9	11	25	3	
			1.57	.98	1.95	.35	.43	.98	.12	
15,5	13 ... 15,5	.5161	41	26	52	12	11	25	3	
			1.61	1.02	2.05	.47	.43	.98	.12	
19	15,5 ... 19	.6175	43	28	55,5	15	11	25	3	
			1.69	1.10	2.19	.59	.43	.98	.12	
23	20 ... 23	.7991	51	35	67	19	14	30	5	
			2.01	1.38	2.64	.75	.55	1.18	.20	
26	23 ... 26	.91 ... 1.02	52	36	70	22	14	30	5	
			2.05	1.42	2.76	.87	.55	1.18	.20	
28,5	26 ... 28,5	1.02 ... 1.12	53	37	73	24	14	30	5	
			2.09	1.46	2.87	.94	.55	1.18	.20	
31	28,5 ... 31	1.12 ... 1.22	55	39	75,5	27	14	30	5	
			2.17	1.54	2.97	1.06	.55	1.18	.20	
36	33 ... 36	1.30 ... 1.42	57	41	81	32	14	40	5	
			2.24	1.61	3.19	1.26	.55	1.57	.20	
39	36 ... 39	1.42 ... 1.54	59	43	83,5	34	14	40	5	
			2.32	1.69	3.29	1.34	.55	1.57	.20	
43	39 ... 43	1.54 ... 1.69	68	48	94,5	38	18	40	5	
			2.68	1.89	3.72	1.50	.71	1.57	.20	
46	43 ... 46	1.69 ... 1.81	70	50	98	41	18	40	5	
			2.76	1.97	3.86	1.61	.71	1.57	.20	
49	46 ... 49	1.81 ... 1.93	73	53	105,5	44	18	40	8	
			2.87	2.09	4.15	1.73	.71	1.57	.31	
52 *	49 ... 52	1.93 ... 2.05	76	56	110	47	18	40	8	
			2.99	2.20	4.33	1.85	.71	1.57	.31	
58	53 ... 58	2.09 ... 2.28	78	58	115	52	18	40	8	
			3.07	2.28	4.53	2.05	.71	1.57	.31	
61	58 ... 61	2.28 ... 2.40	80	60	118,5	57	18	40	8	
			3.15	2.36	4.67	2.24	.71	1.57	.31	

* Similar to DIN 1592.

Alternative materials and surface finishings are available upon request. Consult STAUFF for further information.