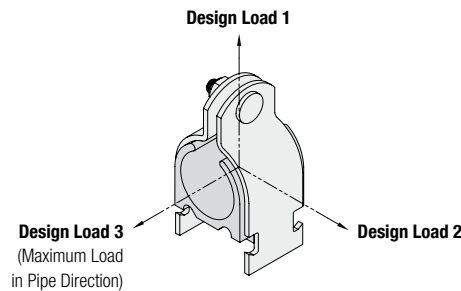
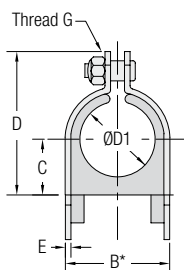


Clamp Assembly - Types STC / SPC

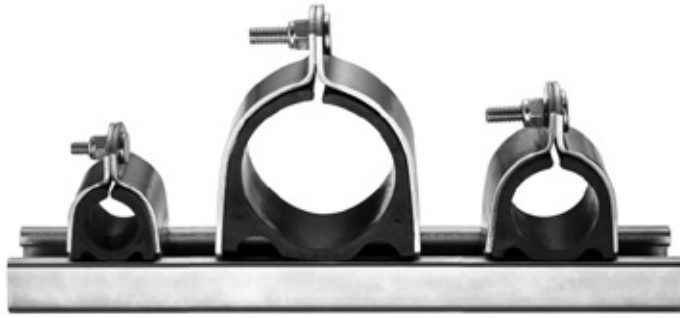
(for Use with Channel Rail SCS)



Outside Diameter Pipe / Tube / Hose Ø D1		Nominal Bore Pipe	Order Codes 1 Clamp Assembly Components Supplied Separately	1 Standard Packaging Unit Components Packed in Kits	Standard Packaging Units	Dimensions (mm/in)					Design Loads (kN/lbf)		
(mm)	(in)	(in)	(** = Material Code)	(** = Material Code)	pcs.	B*	C	D	E	Thread G	1	2	3
6,4	1/4		STC 025 **	STC 025 ** - 24 #K	24 / box	15,7 .62	5,6 0.22	28,2 1.11	2 .08	1/4-20 UNC	1,78 400	0,22 50	0,22 50
8	3/8		STC 037 **	STC 037 ** - 24 #K	24 / box	19,1 .75	7,1 0.28	31,5 1.24	2 .08	1/4-20 UNC	1,78 400	0,22 50	0,22 50
12,7	1/2		STC 050 **	STC 050 ** - 24 #K	24 / box	22,1 .87	8,6 0.34	34,5 1.36	2 .08	1/4-20 UNC	1,78 400	0,22 50	0,22 50
13,5		1/4	SPC 025 **	SPC 025 ** - 24 #K	24 / box	23,1 .91	9,1 0.36	35,8 1.41	2 .08	1/4-20 UNC	1,78 400	0,22 50	0,22 50
16	5/8		STC 062 **	STC 062 ** - 24 #K	24 / box	25,4 1.00	10,4 0.41	38,1 1.50	2 .08	1/4-20 UNC	1,78 400	0,22 50	0,22 50
17,2		3/8	SPC 037 **	SPC 037 ** - 24 #K	24 / box	27,2 1.07	11,4 0.45	40,4 1.59	2 .08	1/4-20 UNC	2,67 600	0,33 75	0,33 75
19	3/4		STC 075 **	STC 075 ** - 24 #K	24 / box	33,8 1.33	13,5 0.53	45,2 1.78	2 .08	1/4-20 UNC	2,67 600	0,33 75	0,33 75
21,3		1/2	SPC 050 **	SPC 050 ** - 24 #K	24 / box	36,8 1.45	15,0 0.59	48,5 1.91	2 .08	1/4-20 UNC	2,67 600	0,33 75	0,33 75
22,2	7/8		STC 087 **	STC 087 ** - 24 #K	24 / box	36,8 1.45	14,7 0.58	48,5 1.91	2 .08	1/4-20 UNC	2,67 600	0,33 75	0,33 75
25,4	1		STC 100 **	STC 100 ** - 12 #K	12 / box	42,2 1.66	16,8 0.66	51,6 2.03	2,8 .11	1/4-20 UNC	2,67 600	0,33 75	0,33 75
26,9		3/4	SPC 075 **	SPC 075 ** - 12 #K	12 / box	45,5 1.79	18,3 0.72	54,9 2.16	2,8 .11	1/4-20 UNC	2,67 600	0,33 75	0,33 75
32	1-1/4		STC 125 **	STC 125 ** - 12 #K	12 / box	48,8 1.92	19,8 0.78	58,4 2.30	2,8 .11	1/4-20 UNC	2,67 600	0,33 75	0,33 75
33,7		1	SPC 100 **	SPC 100 ** - 12 #K	12 / box	56,4 2.22	23,1 0.91	69,9 2.75	3 .12	5/16-18 UNC	2,67 600	0,33 75	0,33 75
38	1-1/2		STC 150 **	STC 150 ** - 12 #K	12 / box	56,4 2.22	23,1 0.91	69,9 2.75	3 .12	5/16-18 UNC	2,67 600	0,33 75	0,33 75
42		1-1/4	SPC 125 **	SPC 125 ** - 12 #K	12 / box	62,7 2.47	26,2 1.03	77,0 3.03	3 .12	5/16-18 UNC	3,56 800	0,56 125	0,56 125
48,3		1-1/2	SPC 150 **	SPC 150 ** - 12 #K	12 / box	62,7 2.47	29,5 1.16	83,3 3.28	3 .12	5/16-18 UNC	3,56 800	0,56 125	0,56 125
50,8	2		STC 200 **	STC 200 ** - 12 #K	12 / box	69,1 2.72	29,5 1.16	83,3 3.28	3 .12	5/16-18 UNC	3,56 800	0,56 125	0,56 125
60,3		2	SPC 200 **	SPC 200 ** #K	1 / bag	69,1 3.22	35,8 1.41	96,0 3.78	3 .12	5/16-18 UNC	3,56 800	0,56 125	0,56 125
63,5	2-1/2		STC 250 **	STC 250 ** #K	1 / bag	88,1 3.47	38,9 1.53	102,4 4.03	3 .12	5/16-18 UNC	3,56 800	0,56 125	0,56 125
66,7	2-5/8		STC 262 **	STC 262 ** #K	1 / bag	88,1 3.47	38,9 1.53	102,4 4.03	3 .12	5/16-18 UNC	3,56 800	0,56 125	0,56 125
73		2-1/2	SPC 250 **	SPC 250 ** #K	1 / bag	94,5 3.72	42,2 1.66	108,5 4.27	3 .12	5/16-18 UNC	3,56 800	0,56 125	0,56 125
76,2	3		STC 300 **	STC 300 ** #K	1 / bag	100,8 3.97	45,2 1.78	114,8 4.52	3 .12	5/16-18 UNC	4,45 1 000	0,89 200	0,67 150
88,9		3	SPC 300 **	SPC 300 ** #K	1 / bag	110,7 4.36	50,0 1.97	124,7 4.91	3 .12	3/8-16 UNC	4,45 1 000	0,89 200	0,67 150
102		3-1/2	SPC 350 **	SPC 350 ** #K	1 / bag	126,2 4.97	57,9 2.28	140,5 5.53	3 .12	3/8-16 UNC	4,45 1 000	0,89 200	0,67 150
114		4	SPC 400 **	SPC 400 ** #K	1 / bag	138,9 5.47	64,3 2.53	153,2 6.03	3 .12	3/8-16 UNC	4,45 1 000	0,89 200	0,67 150
140		5	SPC 500 **	SPC 500 ** #K	1 / bag	164,3 6.47	77,0 3.03	178,6 7.03	3,6 .14	3/8-16 UNC	4,45 1 000	0,89 200	0,67 150
168		6	SPC 600 **	SPC 600 ** #K	1 / bag	189,7 7.47	89,7 3.53	204,0 8.03	3,6 .14	3/8-16 UNC	4,45 1 000	0,89 200	0,67 150

* Minimum required for installation.

One clamp assembly is consisting of two carbon steel clamp halves (one with threaded stud), one thermoplastic cushion insert and one lock nut with Nylon insert. Channel rail not included. All threaded parts are only available with unified coarse (UNC) thread. Alternative materials and surface finishings are available upon request. Consult STAUFF for further information.


Clamp Assembly ▪ Types STC / SPC

(for Use with Channel Rail SCS)


Standard Materials


Cushion Insert
Thermoplastic Elastomer (40 Shore-A)
 Colour: Black

The cushion material is compatible with most oils, chemicals and cleaning solvents and suitable for applications within a temperature range of -50 °C ... +125 °C (-58 °F ... +257 °F).

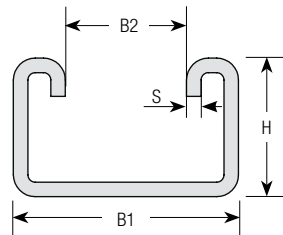
Alternative materials are available upon request.
 Please consult STAUFF for further information.

Product Features

- Clamp assemblies designed to mount directly to 41,3 mm / 1-5/8 in wide strut channels, such as the STAUFF Channel Rail, type SCS
- Suitable for most Fluid Power applications ranging from mobile equipment to industrial machinery
- Reduced horizontal mounting space
- Easy installation and retro fit capability
- Reduces shock and vibration while preventing galvanic corrosion

Order Codes
Clamp Assembly *STC*-125*-W4*-12*-#K

* Type of clamp	STC (Tube diameters) SPC (Pipe diameters)	STC SPC
* Pipe / Tube O.D. (according to dimension table)		-125
* Material code	Carbon Steel, zinc-plated, trivalent blue chromated	W3
	Stainless Steel V2A 1.4301 (AISI 304)	W4
	Stainless Steel V4A 1.4401 (AISI 316)	W5
* Box Quantity	Components for one assembly Components for 12 assemblies Components for 24 assemblies	- 12 24
	Please see dimension table for standard packaging units.	
Assembling	Components supplied separately Components packed in kits	- #K

Channel Rail ▪ Type SCS


Dimensions (mm/in)			
B1	B2	H	S
41,3	22,2	25,4	2,7
1.63 (1-5/8)	.88 (7/8)	1.00	.11

Alternative rail profiles, materials and surface finishings are available upon request. Consult STAUFF for further information.

Order Codes
Strut Channel *SCS*048*1*PL

* Strut Channel		SCS
* Length of Rail	1,22 m / 4.00 ft / 48 in 3,05 m / 10.00 ft / 120 in	048 120
* Height of Rail	25,4 mm / 1.00 in	1
* Material code	Carbon Steel, untreated Carbon Steel, green painted	PL GR