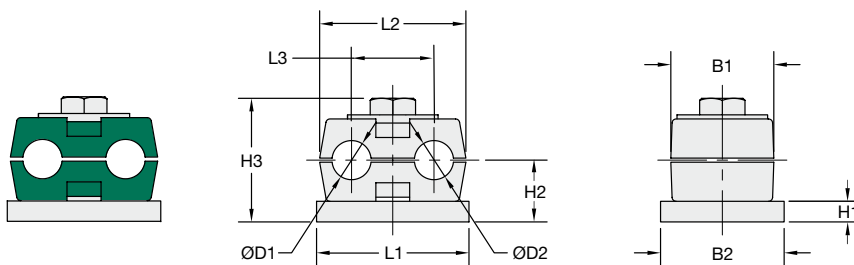
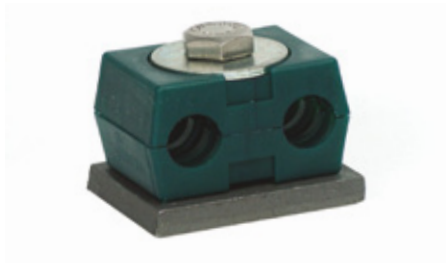


Compact Twin Series: Clamp Body Type DS



Order Codes

Clamp Body ***DS1*06/06*PP**

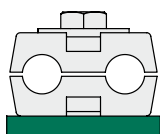
One clamp body is consisting of two clamp halves.

* Compact Twin Series, STAUFF Group 1 **DS 1**
 * Exact outside diameters Ø D1 / Ø D2 (mm) **06/06**
 * Clamp Body Material (Polypropylene) **PP**

Group	Outside Diameter		Nominal Bore		Order Codes (2 Clamp Halves)	Dimensions (mm/in)							
	Pipe / Tube Ø D1 / Ø D2 (mm) (in)		Pipe (in)	Copper Tube (in)		L1	L2	L3	H1	H2	H3	B1	B2
DS 1	6				DS106/06 PP								
	6,4	1/4			DS106,4/06,4 PP	37	35,5	20	5	15	30	25	30
	8	5/16			DS108/08 PP	1.46	1.40	.79	.20	.59	1.18	.98	1.18
	9,5	3/8		1/4	DS109,5/09,5 PP								
	10		1/8		DS110/10 PP								

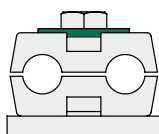
Additional outside diameters are available upon request. Please consult STAUFF for further information.

Compact Twin Series: Metal Hardware



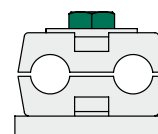
Weld Plate, Type SP DS1

SP DS1 U W2 (unified coarse thread)
 Thread size: 1/4–20 UNC
 Made of Carbon Steel, phosphated



Cover Plate, Type US DS1

US DS1 W3
 Made of Carbon Steel, zn/ni-plated

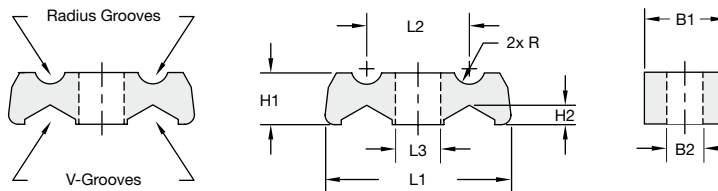


Hexagon Bolt, Type AS DS1

AS DS1 U W3 (unified coarse thread)
 Bolt size: 1/4–20 UNC x 1
 Made of Carbon Steel, zn/ni-plated

All threaded parts are only available with unified coarse (UNC) thread. Rail mount and stacking assemblies as well as alternative materials and surface finishings are available upon request. Consult STAUFF for further information.

Agriculture Twin Series: Clamp Body Type AG



Order Codes

Clamp Body ***AG*2**

* Agriculture Twin Series **AG**
 * STAUFF Group **2**

Group	Min/Max Outside Diameters				Order Codes (1 Clamp Body)	Dimensions (mm/in)							
	Pipe / Tube using Radius Grooves		using V-Grooves			L1	L2	L3	H1	H2	B1	B2	R
2	3 ... 10	.1239	4 ... 15	.2659	AG 2	57,5 2.26	31,7 1.25	14,0 .55	16,0 .63	7,1 .24	25,0 .98	11,0 .43	4,8 .19
3	4 ... 25	.1698	7 ... 20	.2879	AG 3	62,0 2.48	34,5 1.36	14,0 .55	19,0 .75	7,1 .28	32,0 1.26	11,0 .43	12,4 .49

Standard Material



Polypropylene
 Colour: Black

Additional outside diameters are available upon request. Please consult STAUFF for further information.

See page A88 for properties and technical information.

Product Features

- Flip the clamp body to choose between the radius grooved or the v-grooved design (suitable for a range of diameters)
- Use M10 or 3/8–16 UNC bolts or screws (preferably with washers) to fasten clamp bodies directly to the machine
- Clamp bodies can be stacked for multi-level assembly