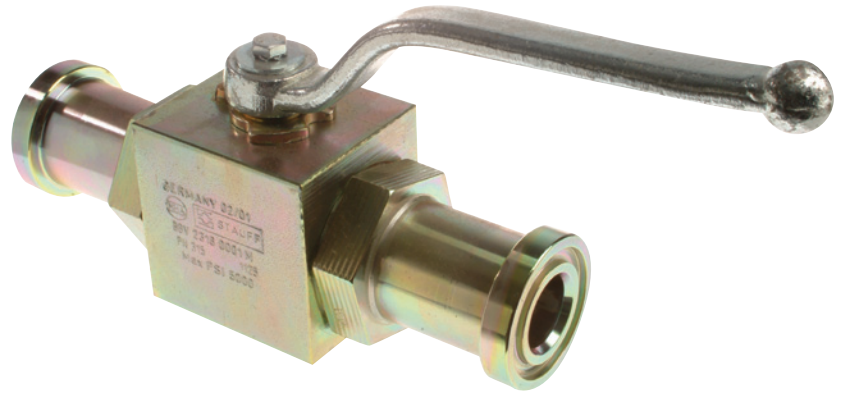


Specifications

- 1/2", 3/4" & 1" Block Body Style
- SAE Code 61 & 62 (SAE Standard J518)
- Split Flange Connectors
- Delrin +MoS2 Ball Seats
- Viton O-Rings
- Carbon Steel Construction Standard;
- Temperature Range: -14°F to 212°F (-10°C to 100°C)
- Zinc Plated Body

Options

- Split Flange Kits Available
SF Series for Both Code 61 & Code 62
(see page A39)
- Stainless Steel
- Locking Kits
- Limit Switches
- Actuator Packages Available
- Straight Handles
- Special Seat and "O"-Ring Materials
Available for Higher Temperatures or
Aggressive Media



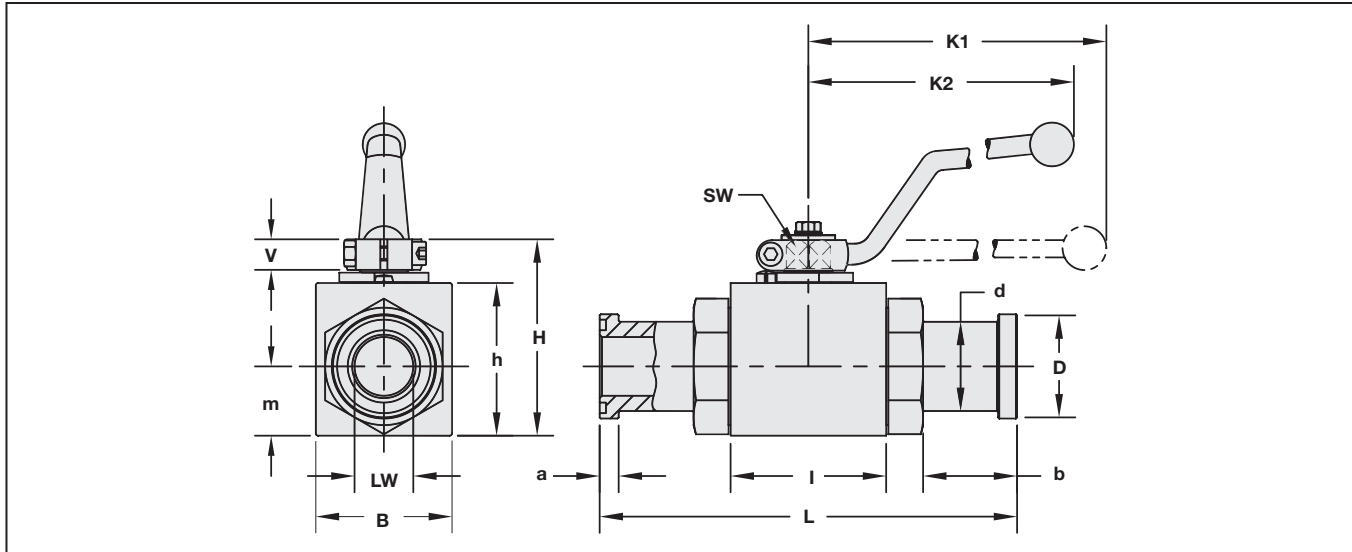
Technical Information

Item Number	Quantity	Description
1	1	Housing
2	1	Ball
3*	2	Seat
4*	2	Connector O-Ring
5	2	Connector
6	1	Stop Pin
7	1	Stem
8*	1	Thrust Ring
9*	1	Stem O-Ring
10	1	Cam Plate
11	1	Snap Ring
12	1	Handle
13	1	Stem Screw
14	1	Flow Indicator

*Included in Seal Kit

Size	Code	Part Number Without Flanges	Part Number With Flanges	Maximum Working Pressure	
				PSI	Bar
1/2"	CODE 61	BBV22080001M	BBV22080001M/SF	5000	345
	CODE 62	BBV23080001M	BBV23080001M/SF	6000	420
3/4"	CODE 61	BBV22120001M	BBV22120001M/SF	5000	345
	CODE 62	BBV23120001M	BBV23120001M/SF	6000	420
1"	CODE 61	BBV22160001M	BBV22160001M/SF	5000	345
	CODE 62	BBV23160001M	BBV23160001M/SF	5000	345
1"	CODE 62	BBV23160001H	BBV23160001H/SF	6000	420

Dimensional Information



Code 61

Size	LW	L	I	B	H	h	m	V	SW	K1	K2	D	d	a	b	Weight
	in mm	in mm	in mm	in mm	in mm	in mm	in mm	in mm	in mm	in mm	in mm	in mm	in mm	in mm	in mm	
1/2"	0.51 12.95	5.94 150.88	1.89 48.01	1.38 35.05	2.13 54.10	1.57 39.88	0.75 19.05	0.43 10.92	0.35 9	5.91 150.11	4.53 115.06	1.19 30.23	0.94 23.88	0.27 6.86	1.73 43.94	2.0 0.91
3/4"	0.75 19.05	6.38 162.05	2.44 61.98	1.93 49.02	2.95 74.93	2.24 56.90	0.96 24.38	0.55 13.97	0.55 14	7.87 199.90	6.30 160.02	1.50 38.10	1.25 31.75	0.27 6.86	1.67 194.82	3.5 1.59
1"	0.98 24.89	7.01 178.05	2.60 66.04	2.28 57.91	3.27 83.06	2.56 65.02	1.16 29.46	0.55 13.97	0.55 14	7.87 199.90	6.30 160.02	1.75 44.45	1.50 38.10	0.32 8.13	1.57 39.88	5.0 2.27
1"(H)	0.98 24.89	7.01 178.05	2.60 66.04	2.76 70.00	3.27 83.06	2.56 65.02	1.16 29.46	0.55 13.97	0.55 14	7.87 199.90	6.30 160.02	1.75 44.45	1.50 38.10	0.32 8.13	1.57 39.88	5.0 2.27

Code 62

Size	LW	L	I	B	H	h	m	V	SW	K1	K2	D	d	a	b	Weight
	in mm	in mm	in mm	in mm	in mm	in mm	in mm	in mm	in mm	in mm	in mm	in mm	in mm	in mm	in mm	
1/2"	0.51 12.95	5.94 150.88	1.89 48.01	1.38 35.05	2.13 54.10	1.57 39.88	0.75 19.05	0.43 10.92	0.35 9	5.91 150.11	4.53 115.06	1.25 31.75	0.94 23.88	0.31 7.87	1.57 39.88	2.0 0.91
3/4"	0.75 19.05	6.85 162.05	2.44 61.98	1.93 49.02	2.95 74.93	2.24 56.90	0.96 24.38	0.55 13.97	0.55 14	7.87 199.90	6.30 160.02	1.63 41.40	1.25 31.75	0.35 8.89	1.85 46.99	3.5 1.59
1"	0.97 24.89	7.80 178.05	2.60 66.04	2.28 57.91	3.27 83.06	2.56 65.02	1.16 29.46	0.55 13.97	0.55 14	7.87 199.90	6.30 160.02	1.87 47.50	1.50 38.10	0.38 9.65	1.97 50.04	5.0 2.27
1"(H)	0.97 24.89	7.80 178.05	2.60 66.04	2.76 70.00	3.27 83.06	2.56 65.02	1.16 29.46	0.55 13.97	0.55 14	7.87 199.90	6.30 160.02	1.87 47.50	1.50 38.10	0.38 9.65	1.97 50.04	5.0 2.27

Ordering Information

BBV 2 2 08 0 0 0 1 M - LD

- Product Type**: Block Body Valve
- No. of Ports**: 2
- Connector Type**: 2 - SAE CODE 61, 3 - SAE CODE 62
- Body Material**: 0 - Carbon Steel Zinc Plated, 1 - 316 Stainless Steel
- Connector Size**: 08 - 1/2", 12 - 3/4", 16 - 1"
- Locking Kit**: LD - Locking Device, OMIT - No Locking Device
- Manufacturing Code**: M - Standard, H - 1" 6000PSI
- O Ring Material**: 1 - Viton
- Seat Material**: 0 - Delrin
- Ball & Stem Material**: 0 - Carbon Steel, 1 - 316 Stainless Steel