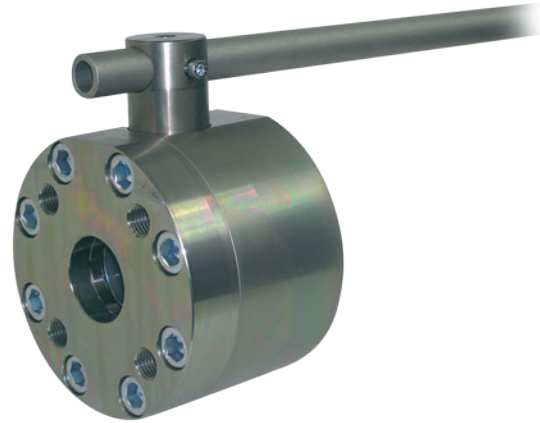


Specification

- 2½" – 5" Direct Mount SAE Code 61 Style Flange Connection
- Delrin +MoS₂ Ball Seats
- Viton O-Rings
- Direct Mount Eliminates Threads in Fluid Flow
- Machined Body Parts for Reduced Torque Operation.
- Pressure Range: Up to 2500 PSI** (160 bar)
- Temperature Range: -30°F to 212°F (-34°C to 100°C)
- Carbon Steel Construction
- Removable, Adjustable Steel Handle
- Zinc Plated Body



Options

- Flange Kits Available
- Stainless Steel
- Locking Kits
- Limit Switches
- Actuator Packages Available

Technical Information

Item Number	Quantity	Description
1	1	Housing
2	1	Ball
3*	2	Seat
4*	2	O-Ring
5	2	Outer S/S Support Ring
6	2	Inner S/S Support Ring
7*	1	Cover O-Ring
8	9	Cover Bolts
9	1	Cover
10	1	Stop Screw
11	1	Stem
12*	1	Thrust Ring
13*	1	Stem O-Ring
14*	1	Back-up Ring
15	2	Set Screws
16	1	Stem/Handle Adaptor
17	1	Screw
18	1	Steel Handle

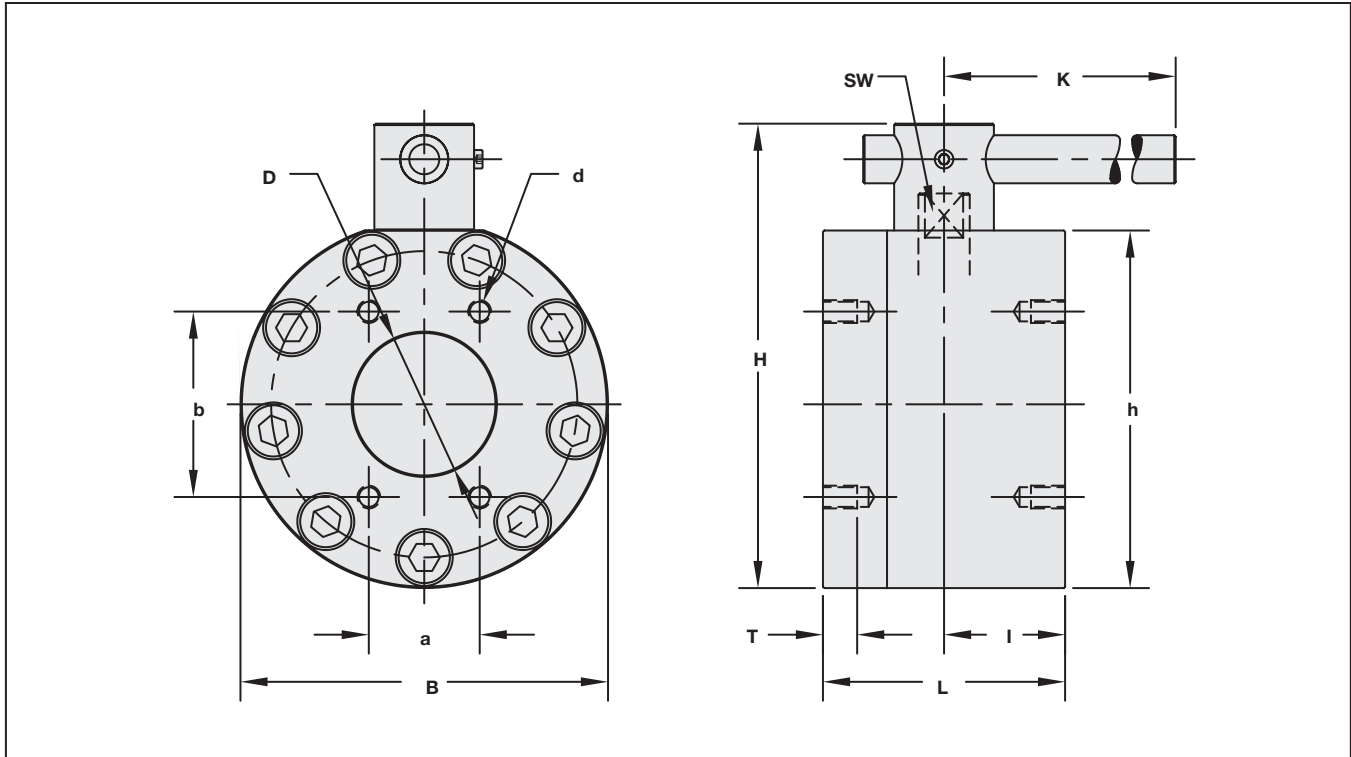
*Included in Seal Kit

** Working Pressure for these valves is limited to the SAE Flange Ratings, higher pressures can be accommodated with special Flange Connectors. See "BBVF" Series on page V22.

Size		Part Number	Maximum Working Pressure	
			**PSI	Bar
2½"	CODE 61	BBV27400001M *	2500 PSI	170
3"	CODE 61	BBV27480001M	2000 PSI	138
4"	CODE 61	BBV27640001M	500 PSI	35
5"	CODE 61	BBV27800001M	500 PSI	35

* Use with 1/2"-13 x 1 1/2" Gr. 8 Bolts

Dimensional Information



Size	D	L	I	B	H	h	SW	K	a	b	UNC Thread d	T	Weight
	in mm	in mm	in mm	in mm	in mm	in mm	in mm	in mm	in mm	in mm		in mm	lb kg
2½" *	2.48 63	5.91 150	2.95 75	7.80 198	10.16 258	3.70 94	0.75 19	23.62 600	2.00 51	3.50 89	½"	0.75 19	67.10 30.50
3"	2.99 76	5.51 140	2.76 70	8.27 210	10.91 277	3.94 100	0.75 19	23.62 600	2.44 62	4.19 106	⅝"	0.94 24	68.20 31.00
4"	3.94 100	6.69 170	3.35 85	10.16 258	12.83 326	4.80 122	0.94 24	35.43 900	3.06 78	5.13 130	⅝"	0.94 24	121.00 55.00
5"	4.65 118	8.27 210	4.13 105	11.61 295	14.84 377	5.51 140	1.42 36	35.43 900	3.63 92	6.00 152	¾"	1.18 30	193.60 88.00

* Use with 1/2"-13 x 1 1/2" Gr. 8 Bolts

Ordering Information

