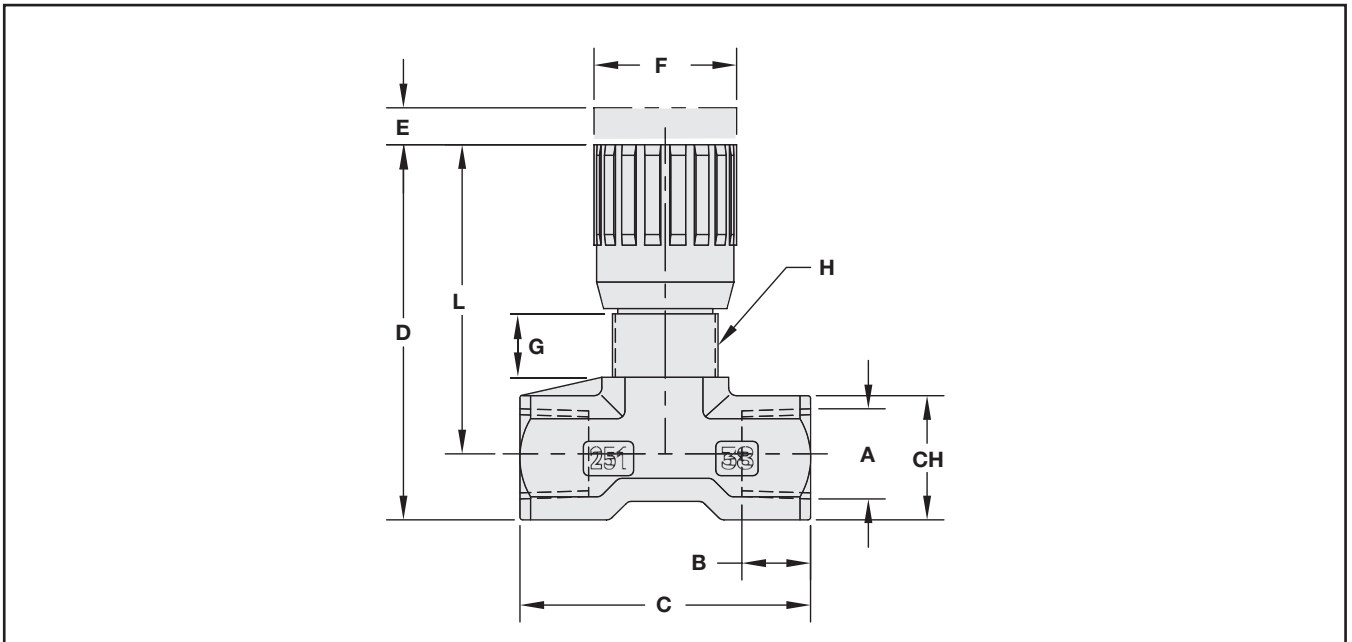
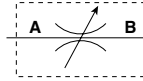


Specifications

- Sizes to 1/4", 3/8" and 1/2" NPT, SAE, and BSP
- Working Pressure 3000 PSI (200 bar)
- Nickel Plated Brass Body, Stainless Steel Needle
- Flow Setting Can Be Locked With Handle Set Screw
- Stem Seal-Buna with PTFE Back Up Ring
- Temperature range: -30°F to 250°F (-34°C to 121°C)

Options

- VITON Seals
- Panel Mount Lock Nut (See Page V56)



Dimensions

| Part Number | Thread A | B | | C | | D | | E | | F | | G | | H | L | | CH | | Weight | | |
|-------------|----------|------|----|------|----|------|----|------|----|------|----|------|----|---------|----|------|----|------|--------|------|--|
| | | mm | in | mm | in | mm | in | mm | in | mm | in | mm | in | | mm | in | mm | in | kg | lb | |
| NVM-8B | 1/4" BSP | 12 | | 46 | | 57 | | 4,5 | | 22 | | 11,5 | | M17X1 | 11 | | 17 | | 0.12 | | |
| NVM-8N | 1/4" NPT | | | | | | | | | | | | | | | | | | | | |
| NVM-8S | -4 SAE | 0.47 | | 1.81 | | 2.24 | | 0.18 | | 0.87 | | 0.45 | | | | 0.43 | | 0.67 | | 0.26 | |
| NVM-10B | 3/8" BSP | 13 | | 55 | | 69 | | 7 | | 27 | | 12,5 | | M20X1 | 15 | | 22 | | 0.23 | | |
| NVM-10N | 3/8" NPT | | | | | | | | | | | | | | | | | | | | |
| NVM-10S | -6 SAE | 0.51 | | 2.17 | | 2.72 | | 0.28 | | 1.06 | | 0.49 | | | | 0.59 | | 0.97 | | 0.51 | |
| NVM-12B | 1/2" BSP | 16 | | 70 | | 82 | | 10 | | 33 | | 13 | | M25X1,5 | 19 | | 27 | | 0.45 | | |
| NVM-12N | 1/2" NPT | | | | | | | | | | | | | | | | | | | | |
| NVM-12S | -8 SAE | 0.63 | | 2.76 | | 3.23 | | 0.39 | | 1.30 | | 0.51 | | | | 0.75 | | 1.06 | | 1.0 | |

* Consult factory for delivery on SAE, BSP Threads.