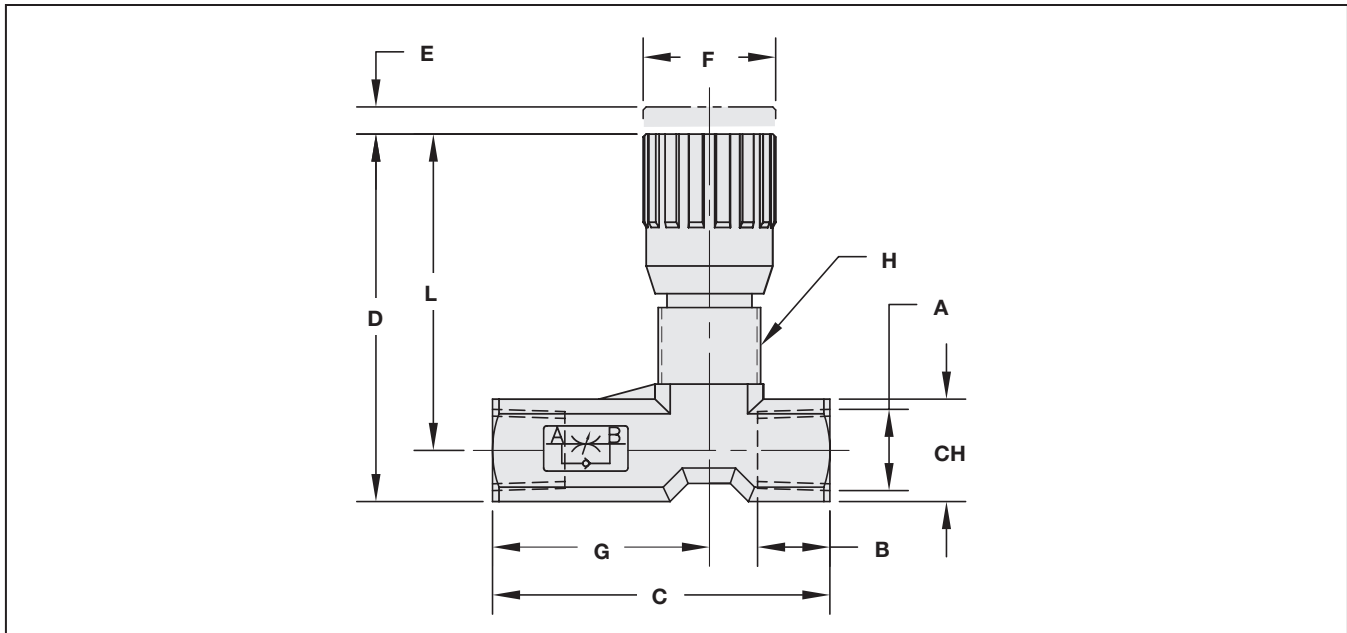
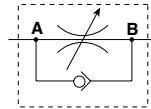


## Specifications

- Sizes to 1/4", 3/8" and 1/2"
- NPT or BSP Threads
- Working Pressure 3000 PSI (200 bar)
- Nickel Plated Brass Body, Stainless Steel Needle
- Flow Setting Can Be Locked With Handle Set Screw
- Stem Seal-Buna With PTFE Back Up Ring
- Temperature range: -30°F to 250°F (-34°C to 121°C)

## Options

- VITON Seals
- Panel Mount Lock Nut (See Page V56)



## Dimensions

Part Number	Thread A	B		C		D		E		F		G		H	L		CH		Weight	
		mm	in	mm	in	mm	in	mm	in	mm	in	mm	in		mm	in	mm	in	kg	lb
FCM-8N	1/4" NPT	12	0.47	56	2.20	57	2.24	4,5	0.18	22	0.87	11,5	0.45	M17X1	11	0.43	17	0.67	0.14	0.31
FCM-8B	1/4" BSP																			
FCM-8S	-4 SAE																			
FCM-10N	3/8" NPT	13	0.51	64,5	2.54	69	2.72	7	0.28	27	1.06	12,5	0.49	M20X1	15	0.59	22	0.97	0.26	0.57
FCM-10B	3/8" BSP																			
FCM-10S	-6 SAE																			
FCM-12N	1/2" NPT	16	0.63	87	3.42	82	3.23	10	0.39	33	1.30	13	0.51	M25X1,5	19	0.75	27	1.06	0.49	1.08
FCM-12B	1/2" BSP																			
FCM-12S	-8 SAE																			

\* Consult factory for delivery on SAE, BSP Threads.