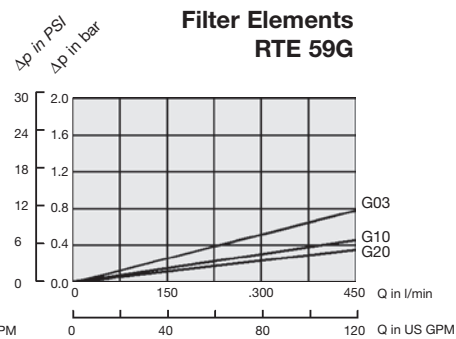
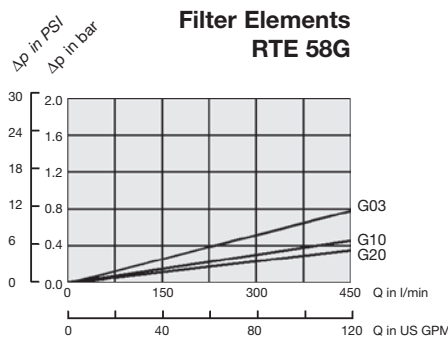
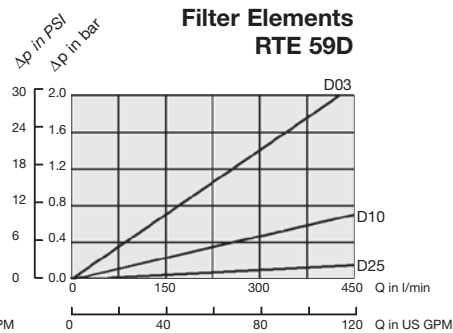
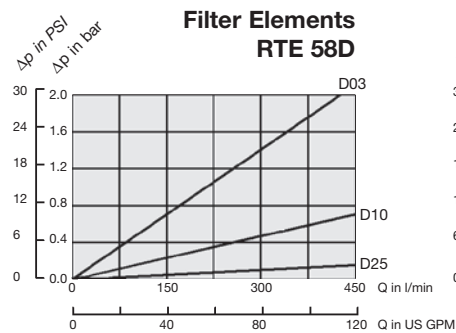
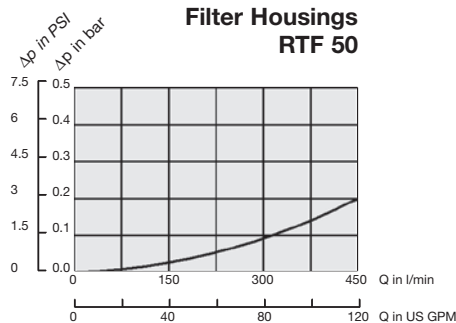


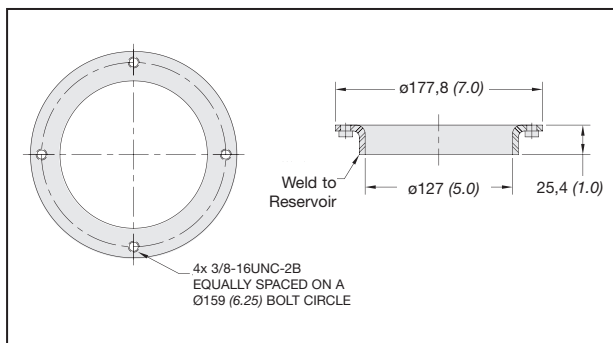
Flow Characteristics of Return Line Filters RTF50

The following characteristics are valid for mineral oils with a density of 0,85 kg/dm³ and the kinematic viscosity of 30 mm²/s. The characteristics have been determined in accordance to ISO 3968.



Note: Element pressure drop curves are for "S1" single elements. For "S2" double elements use 50% of the "S1" Value.

RTF Series Accessories



Dimensions in mm (inch)

RTF50 Series Weld Ring WR-40

The WR-40 weld ring is welded directly to the hydraulic reservoir, eliminating the need for drilling and tapping mounting holes in the reservoir.

Material Carbon Steel