

Technical Data

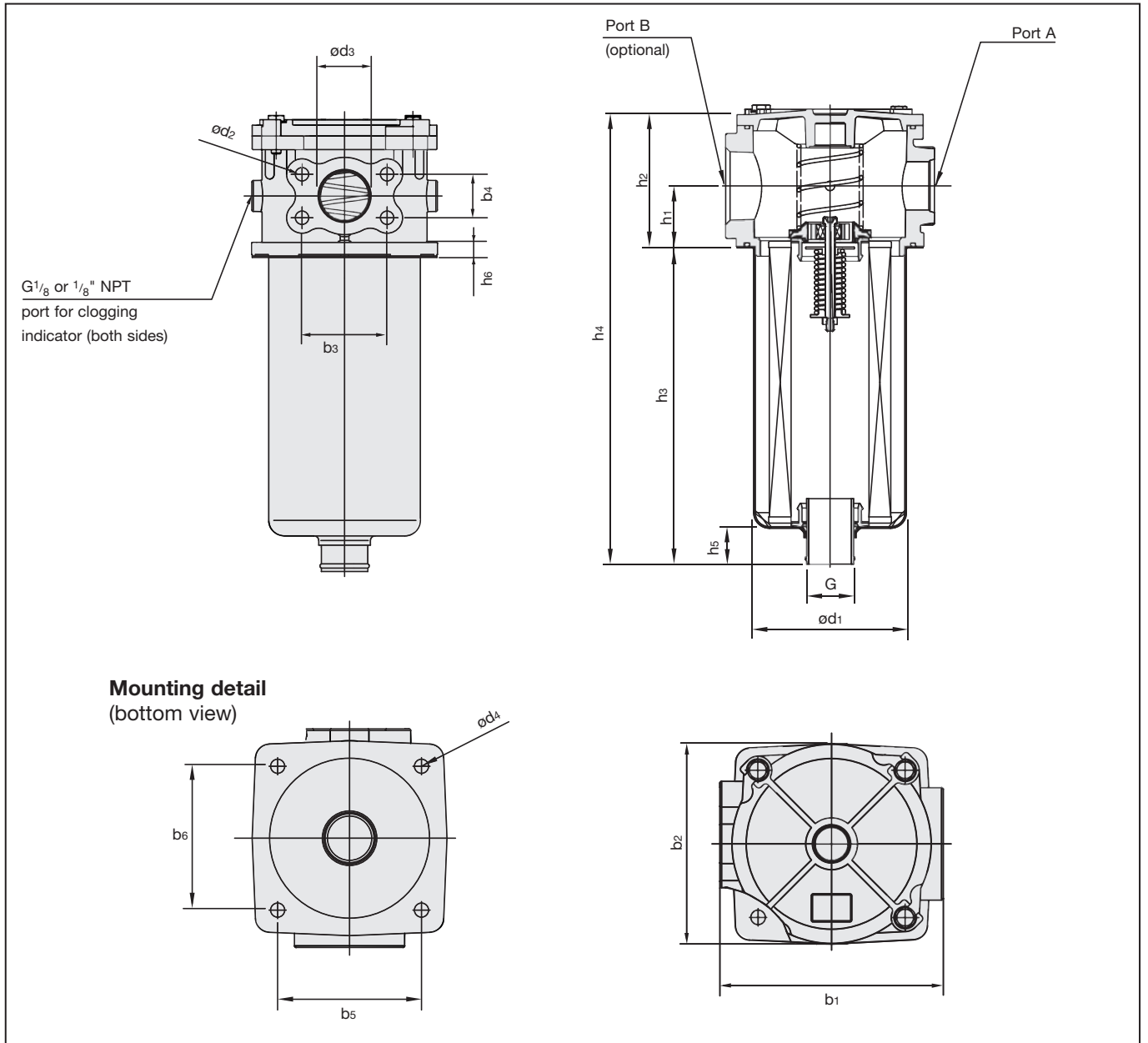
STAUFF RTF40 series return filters are designed as tank top filters with a maximum operating pressure of 6.9 bar (100 PSI). The filter bowl is designed to return the oil beneath the surface thus preventing entrainment of air.



Technical Specification

Construction	Tank top flange mounting	By-pass valve	Allows unfiltered oil to by-pass the contaminated element once the opening pressure has been reached
Filter head	Die cast aluminum	By-pass setting	1.7 bar (25 PSI) (by-pass in element for RTF47, by-pass in head for RTF48 and RTF49)
Element bowl	Bowl length 1, Polyamide Bowl length 2, Steel	Clogging indicators	Gage indicator 0-6.9 bar (0-100 PSI) with colored segments; electrical, 0.35-2.5 bar (5-35 PSI) adjustable
Seals	“O”-Rings NBR (Buna-N®),	Elements	Flow characteristics see page F75
Port connections	BSP, NPT, SAE-“O”-Ring thread, SAE flange	Media	Mineral oils, other fluids on request
Flow rating	up to 379 l/min (100 US GPM) for 32cSt (150 SUS) fluids		
Operating pressure	max 6.9 bar (100 PSI)		
Temperature range	-25°C to +95°C (-13°F to +212°F)		

Dimensions



Dimensions in mm (inch)

Dimensions RTF40 Filters

Bowl Length	h_1	h_2	h_3	h_4	h_5	h_6	b_1	b_2	b_3	b_4	b_5	b_6	d_1	d_2		d_3	d_4	G
														BSP	NPT & SAE			
S1	50 (1.97)	112 (4.41)	263 (10.35)	385 (15.16)	21 (0.83)	11 (0.43)	171 (6.73)	152 (5.98)	69,9 (2.75)	35,6 (1.40)	112 (4.41)	112 (4.41)	122 (4.80)	M12	$1/2$ -13 UN 2B	38,1 (1.50)	11 (0.43)	G1- $1/2$ " or 1- $1/2$ NPT
S2			475 (18.70)	587 (23.11)	38 (1.50)													

RTF48 N 25 ... B / S2 / V / X

Filter Type RTF47 RTF48 RTF49

Connection Style		Group	
Code	Connection style	Port A	Port B
B	BSP	G1-1/4 & 1-1/2 SAE flange	None
BB	BSP	G1-1/4 & 1-1/2 SAE flange	G1-1/4
N	NPT	1-1/4 NPT & 1-1/2 SAE flange	None
NN	NPT	1-1/4 NPT & 1-1/2 SAE flange	1-1/4 NPT
M	NPT	1-1/2 NPT	None
MN	NPT	1-1/2 NPT	1-1/4 NPT
MM	NPT	1-1/2 NPT	1-1/2 NPT
S	SAE	1-5/8 -12 UN	None
SS	SAE	1-5/8 -12 UN	1-5/8 -12 UN
ST	SAE	1-5/8 -12 UN	1-7/8 -12 UN
SU	SAE	1-5/8 -12 UN	2-1/2 -12 UN
SO	Combination	1-5/8 -12 UN	2 NPT
TT	SAE	1-7/8 -12 UN	1-7/8 -12 UN

Design Code
only for information

Clogging Indicator

N	None
V	Visual
E	Electrical

See page F88 for more details on the indicator options.

Length

S1	for bowl length 1 (1 element)
S2	for bowl length 2 (2 elements)

Note: RTF 47 available in S1 bowl only

Seal Material

B	NBR (Buna-N®)
----------	---------------

other seal material on request

For Complete Filters:
identification filter material
+ micron rating code
(see ordering code filter elements below)

By-pass Valve

Code	By-pass setting
00	No by-pass
15	1 bar (15 PSI)
25	1.7 bar (25 PSI)

FILTRATION

RTE48 D 10 B / X

Group
according to filter housing

Design Code
only for information

Filter Material			Micron ratings available
Code	Material	Max Δp Collapse	
D	Filter paper	10 bar (150 PSI)	03, 10, 20, 25
G	Inorganic glass fiber	10 bar (150 PSI)	03, 10, 25

Seal Material

B	NBR (Buna-N®)
----------	---------------

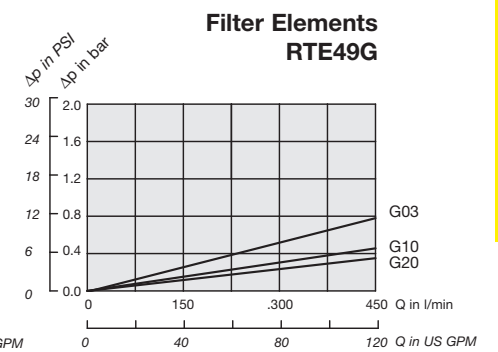
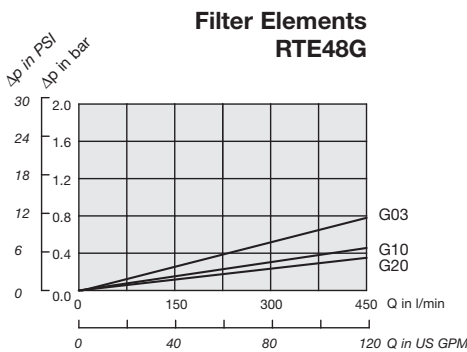
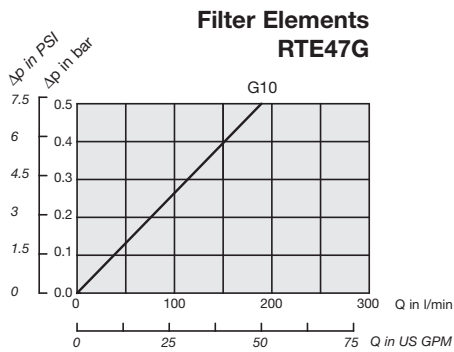
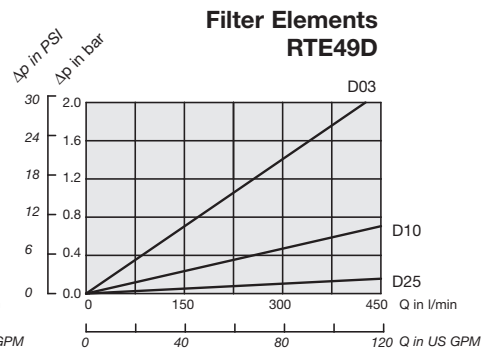
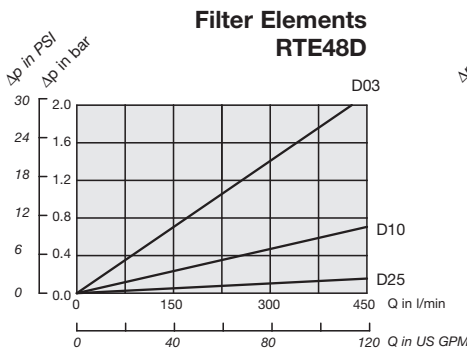
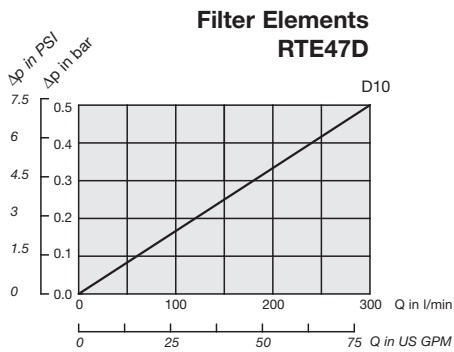
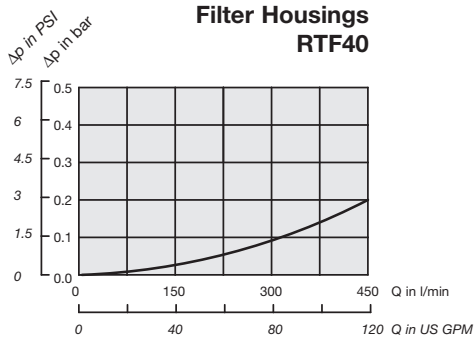
other seal material on request

Micron Rating

Code	Rating
03	03 μm
10	10 μm
20	20 μm
25	25 μm

Flow Characteristics of Return Line Filters RTF40

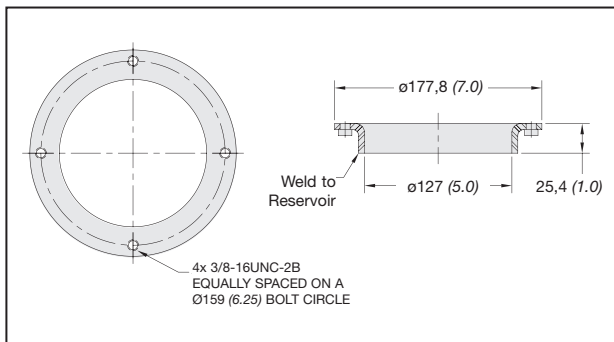
The following characteristics are valid for mineral oils with a density of 0,85 kg/dm³ and the kinematic viscosity of 30 mm²/s. The characteristics have been determined in accordance to ISO 3968. Multipass filter ratings have been obtained in accordance to ISO 16889. Consult factory for details.



FILTRATION

Note: Element pressure drop curves are for "S1" single elements.
For "S2" double elements use 50% of the "S1" Value.

RTF Series Accessories



Dimensions in mm (inch)

RTF40 Series Weld Ring WR-40

The WR-40 weld ring is welded directly to the hydraulic reservoir, eliminating the need for drilling and tapping mounting holes in the reservoir.

Material Carbon Steel