

Technical Data

STAUFF RIF48 series return filters are designed for in-line hydraulic applications with a maximum operating pressure of 20 bar (300 PSI). **The RIF48 series in-line filter meets the HF4 Automotive Standard.**

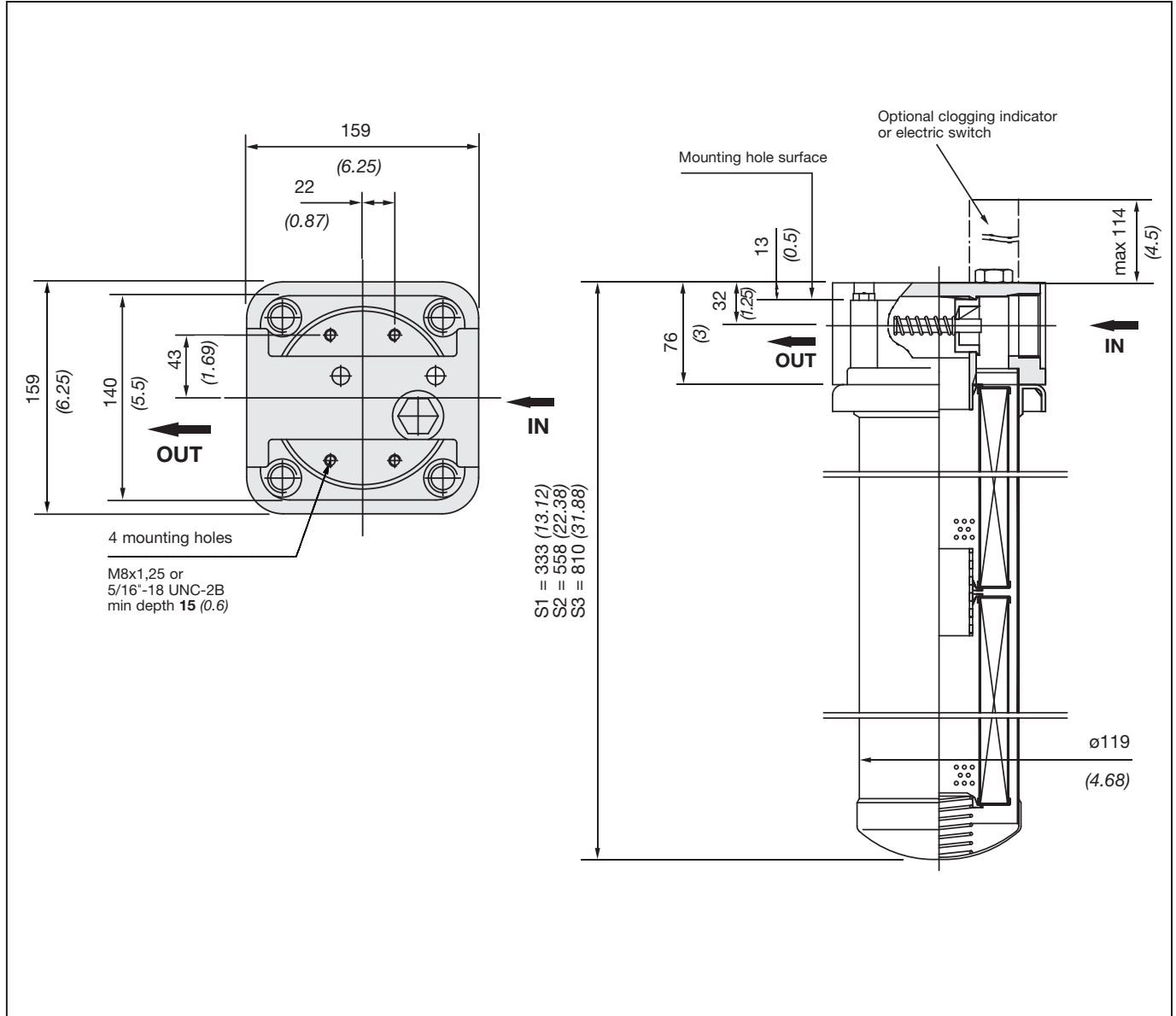


Technical Specification

Construction	In-line assembly
Filter head	Die cast aluminium
Element case	Steel
Seals	O-Rings NBR (Buna-N®) FPM (Viton®)
Port connections	BSP, NPT, SAE "O"-Ring thread or SAE Code 61 flange
Flow rating	up to 380 l/min (100 US GPM) for 32 cSt (150 SUS) fluids
Operating pressure	max 20 bar (300 PSI)
Burst pressure	min 70 bar (1000 PSI)

Temperature range	-29°C to +107°C (-20°F to +225°F)
By-pass valve	Allows unfiltered oil to by-pass the contaminated element once the opening pressure has been reached
By-pass setting	2.8 bar (40 PSI)
Clogging indicators	standard actuating pressure 2.8 bar (40 PSI) indicators types: visual and electrical (AC and DC voltage versions)
Filter elements	Flow characteristics see page F32
Media	Mineral oils, other fluids on request

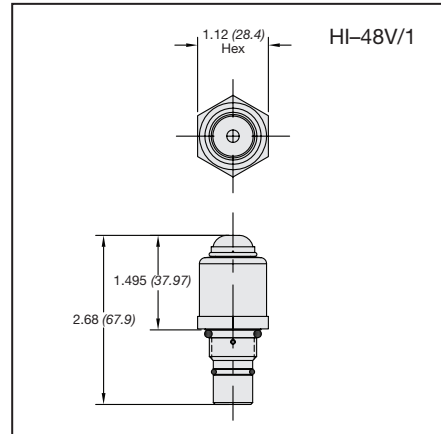
Dimensions



Dimensions in mm (inch)

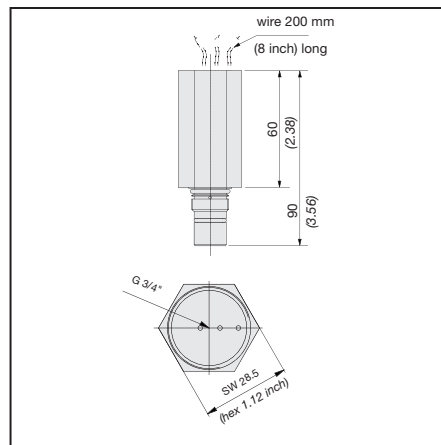
1. Visual clogging indicator

Part number HI48-V is a mechanical magnetic cartridge with a highly visible red disk that pops up at 2.8 bar (40 PSI). Once activated the red signal continues to indicate a by-pass condition until it is manually reset.



2. Electrical clogging indicator

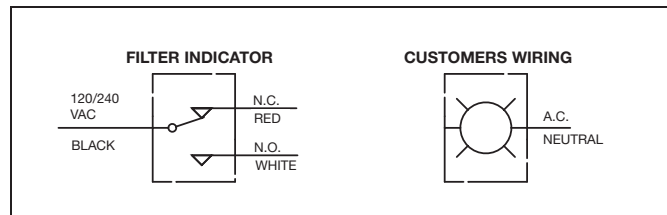
Part numbers HI48-EAC and HI48-EDC are used when a electrical signal is needed to indicate when the element needs changing. The solid state switch is activated at 2.8 bar (40 PSI). The indicators are supplied with a 200 mm (8 in) long wire leads and are NEMA 4 rated.



FILTRATION

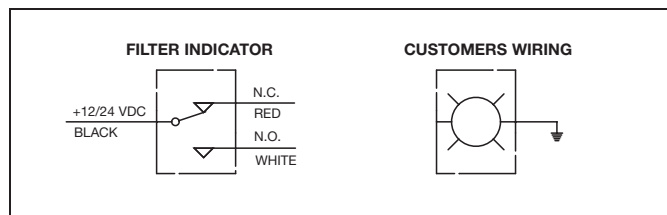
2.1 HI48-EAC Ratings

Voltage	max 240 VAC
Wattage	max 720 Watts
Current	0.10 to 6 amps
Contact type	solid state



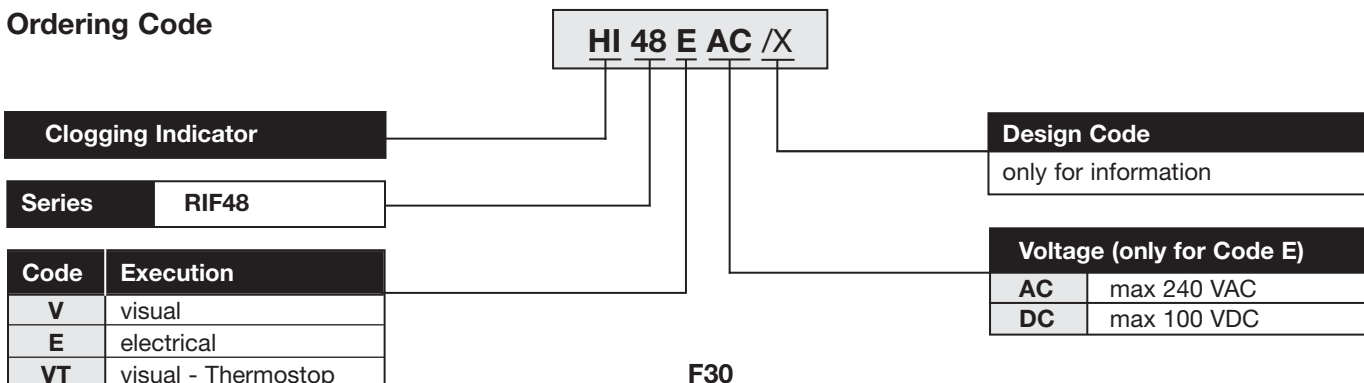
2.2 HI48-VDC Ratings

Voltage	max 100 VDC
Wattage	max 50 Watts
Current	0.01 to 2 amps
Contact type	solid state

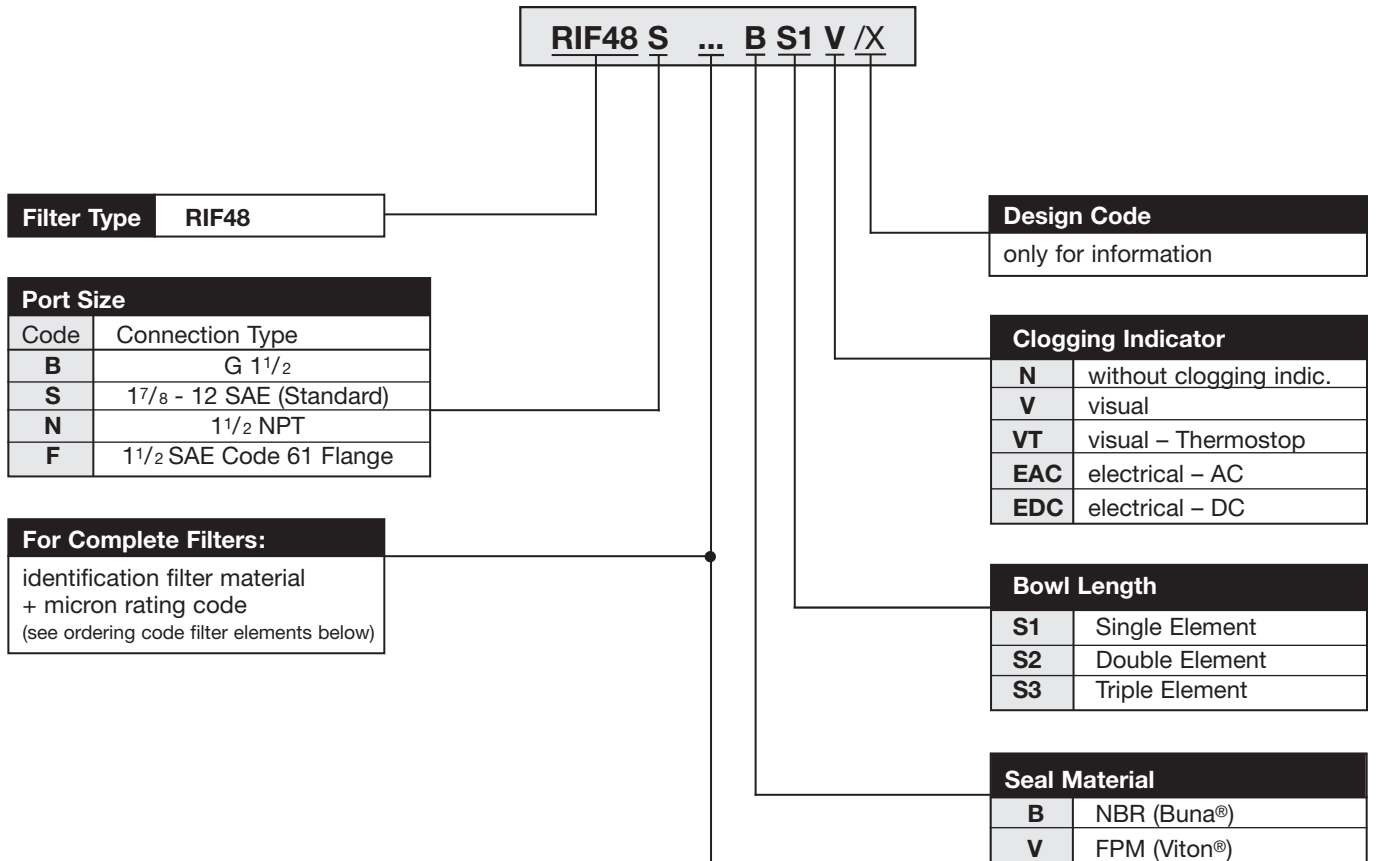


Dimensions in mm (inch)

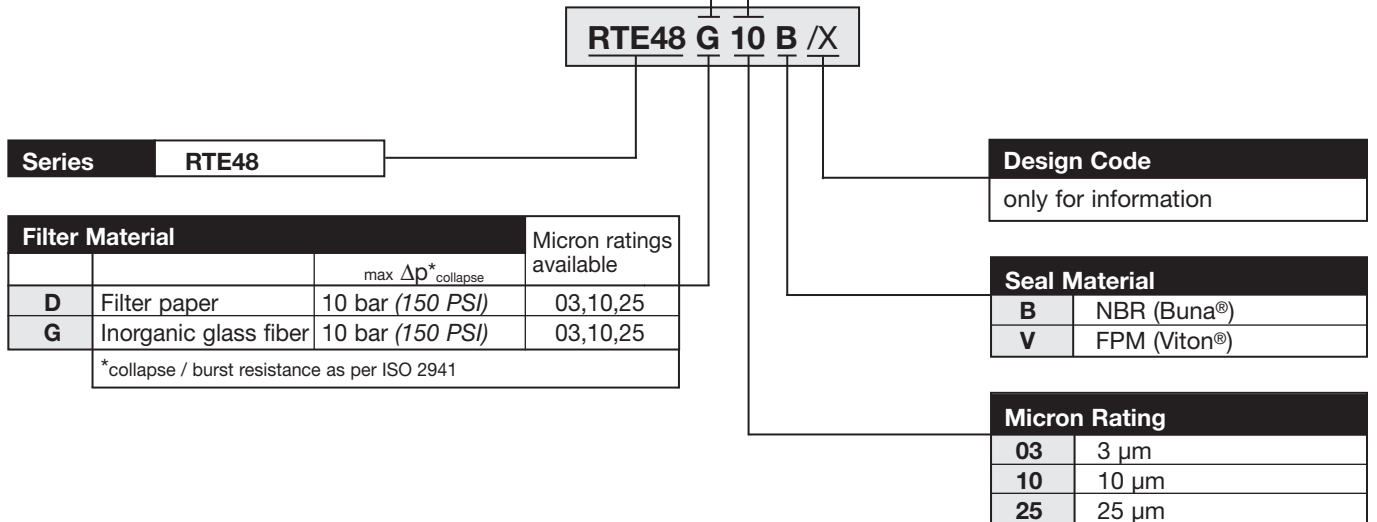
Ordering Code



Ordering Code Filter Housings



Ordering Code Filter Elements



Flow Characteristics

The following characteristics are valid for mineral based fluids with a density of 0,85 kg/dm³ and the kinematic viscosity of 30 mm²/s. The characteristics have been determined in accordance to ISO 3968.

