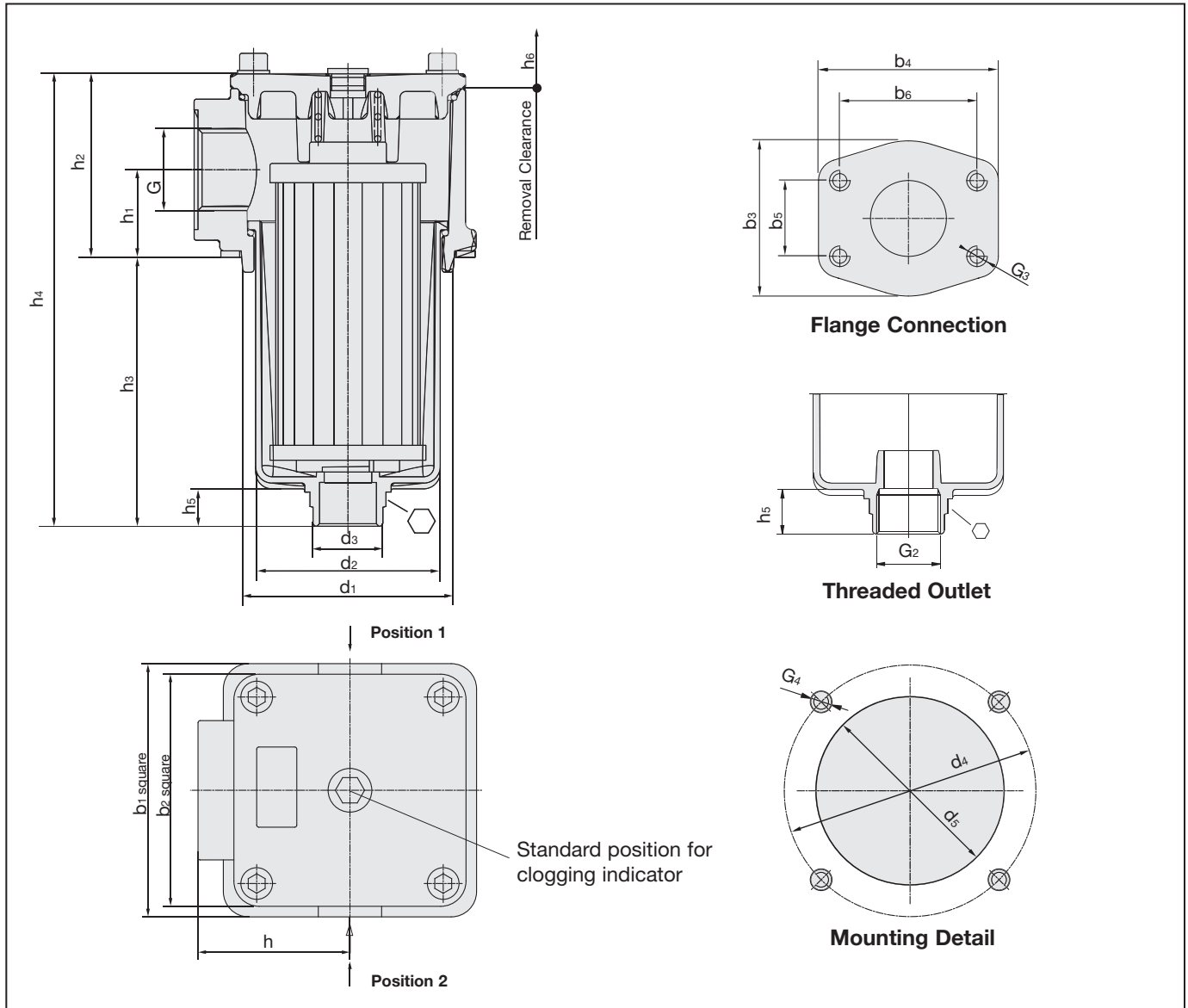


## Dimensions RF 014-130



## Dimensions Return Line Filters

Dimensions in mm (inch)

Filter Size	Thread Connection G				Dimensions																				
	BSP	NPT	SAE- "O" Ring Thread	SAE Flange 3000 PSI	b <sub>1</sub>	b <sub>2</sub>	b <sub>3</sub>	b <sub>4</sub>	b <sub>5</sub>	b <sub>6</sub>	d <sub>1</sub>	d <sub>2</sub>	d <sub>3</sub>	d <sub>4</sub>	d <sub>5</sub>	h <sub>1</sub>	h <sub>2</sub>	h <sub>3</sub>	h <sub>4</sub>	h <sub>5</sub>	h <sub>6</sub>	l <sub>1</sub>	G <sub>2</sub>	G <sub>3</sub>	G <sub>4</sub>
RF014	G 3/4	3/4"	1 1/16-12 UN	-	89	80					73	57,5	36	100	78	33	66	91,5	157,5		140	48	G1		M6
RF030	G 1	1"	1 5/16-12 UN		89 (3.5)	80 (3.15)					73 (2.87)	57,5 (2.26)	36 (1.42)	100 (3.94)	78 (3.07)	33 (1.3)	66 (2.6)	159,5 (6.3)	225,5 (8.88)	23,5 (0.93)	210 (8.27)	48 (1.89)	G1 or 1"NPT		M6 or 1/8" UNC
RF045	G 1 1/4	1 1/4"	1 5/8-12 UN		120	110					100	84	48	135	105	41	86	119	206		180	66	G1 1/4		M8
RF070	G 1 1/2	1 1/2"	1 7/8-12 UN		120 (4.72)	110 (4.33)					100 (3.94)	84 (3.31)	48 (1.89)	135 (5.14)	105 (4.13)	41 (1.61)	86 (3.39)	180 (7.09)	267 (10.51)	24 (0.95)	240 (9.45)	66 (2.6)	G1 1/4 or 1 1/2"NPT		M8 or 3/8" UNC
RF090	G 2	2"	1 7/8-12 UN	2"	150	135	88	102	42,9	77,8	126	112,5	54,5	170	131	47	98	172,5	273,5		235	85	G1 1/2	1/2	M10
RF130	G 2	2"	1 7/8-12 UN		150 (5.91)	135 (5.14)	88 (3.47)	102 (4.02)	42,9 (1.69)	77,8 (3.06)	126 (4.96)	112,5 (4.43)	54,5 (2.15)	170 (6.69)	131 (5.16)	47 (1.85)	98 (3.86)	252,5 (9.94)	353,5 (13.92)	27 (1.06)	315 (12.4)	85 (3.35)	G1 1/2 or 1 1/2"NPT	1/2 x15 (x0.59)	M10 or 3/8" UNC