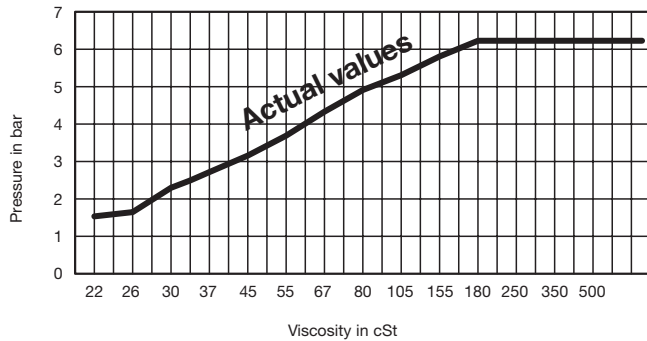


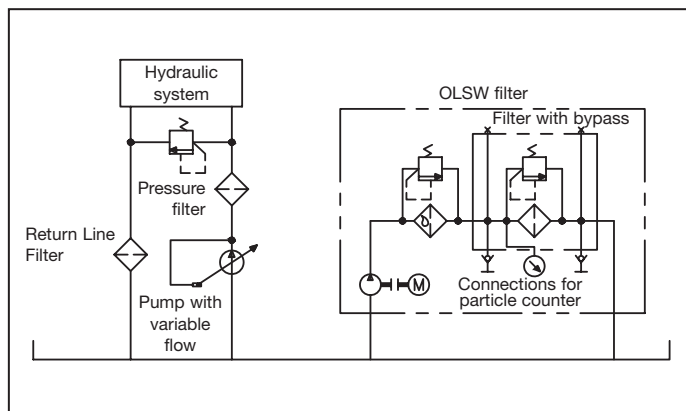
## Technical Data OLSW

Type Filter	OLSW - 1A - 30 - H - B	OLSW - 1B - 30 - H - B
No. of filter housings	1	1
Material filter housings	Anodized Aluminum	
Seal material	Buna-N Standard	
Nominal Flow	2,1 l/min (0,6 US GPM)	4,2 l/min (1,1 US GPM)
By-pass opening pressure	6,2 bar (90 PSI at 0 PSI back pressure)	
Number of standard filter elements	1 pcs.	2 pcs.
Number of Pre-filter elements	1 pcs.	1 pcs.
Water absorbing capacity	650 ml (22 oz.)	800 ml (27 oz.)
Max pressure filter housing	20 bar (290 PSI)	
Max oil temperature	80°C (176°F)	
Max viscosity	160 cSt	
Indicator type	Gauge glycerine filled	
Connection pump suction	1/2" BSP female	1/2" BSP female
Diameter hose suction side	1/2"	
Filter return connection	1/2" BSP female	
Diameter hose return side	1/2"	
Dimensions (HxBxL)	400 x 360 x 330 mm (15.7 x 14.2 x 13")	710 x 410 x 320 mm (28 x 16 x 12.6")
Pump type	Gear pump	
Power supply E-motor	Various electrical power supplies possible	
Max system volume	1,350 liter (356 gal)	2,700 liter (713 gal)
<b>Standard units for larger system volumes are also available</b>		
Connection oil-analysis: P1 filter inlet side P2 filter outlet side	Test connector (M16x2) Red Test connector (M16x2)	

## $\Delta p$ / Viscosity for OLSW-Filter



## System example Schematic Off-line filtration incl. water absorption



Water absorbing spin-on filter element