

SPG Specifications

- Glycerin filled for accuracy
- 304 stainless steel case
- Copper alloy wetted parts
- Crimped on stainless steel bezel
- Polycarbonate lens for 2" and 2.5"
- Acrylic lens for 4"
- PSI/BAR dual scale
- Built in relief valve for low pressure models
- Operating temperatures
 - Ambient -20°C to 60°C (-4°F to 140°F)
 - Media 60°C (140°F)
- Accuracy $\pm 2/1/2\%$ of span
- Built in restrictor

Options

- 2", 2.5" and 4" sizes available
- 316 stainless steel wetted parts
- U-bracket
- Front flange
- Rear flange
- Dry – Without liquid fill
- Silicon fill
- Drag pointer (max reading indicator)
- Rubber protective cover

WPG Specifications

- Glycerin filled for accuracy
- Forged brass case
- Copper alloy bourdon tube
- ABS cover ring bezel
- Acrylic lens
- PSI/BAR dual scale
- Built in relief valve for low pressure models
- Operating temperatures
 - Ambient -20°C to 60°C (-4°F to 140°F)
 - Media 60°C (140°F)
- Accuracy $\pm 2/1/2\%$ of span
- Built in restrictor

SPGS Specifications

- Low cost commercial type gauge
- Painted black steel case
- Copper alloy wetted parts
- Snap in acrylic window
- PSI scale
- Operating temperatures
 - Ambient -20°C to 60°C (-4°F to 140°F)
 - Media 60°C (140°F)
- Accuracy $\pm 3/2/3\%$ of span

Contact Stauff for availability

SPGI Specifications

- High precision type gauge
- 304 stainless steel case
- 316 stainless steel wetted parts
- Bayonet ring type bezel
- PSI scale
- Operating temperatures
 - Ambient -20°C to 60°C (-4°F to 140°F)
 - Media 100°C (212°F)
- Accuracy $\pm 0.25\%$ of span

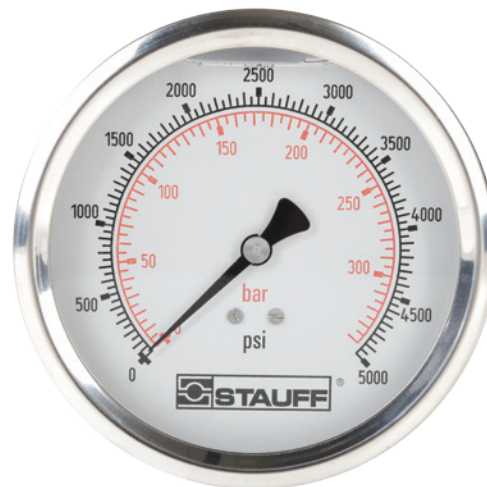
Contact Stauff for availability



SPGI Style



WPG Style



SPG Style