

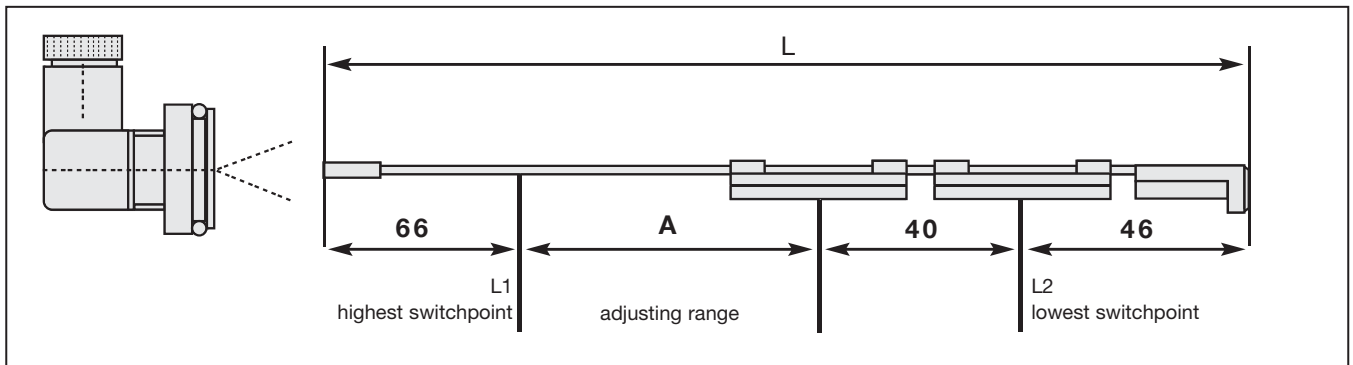
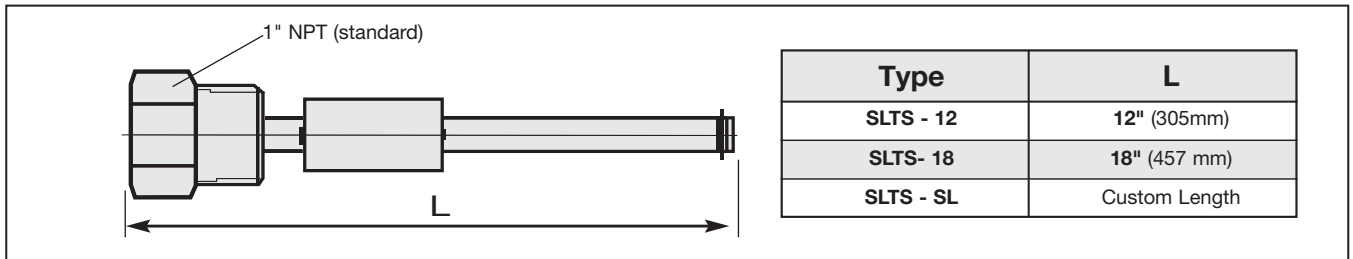
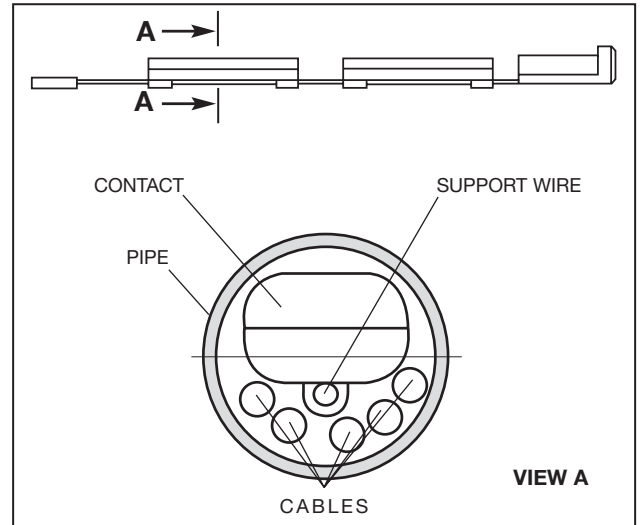
SPECIFICATIONS

Specifications

- Brass Stem, Plastic float
- Compatible with mineral oils and petroleum based fluids
- Switches normally closed (NC)
- Max. operating temp 176°F
- Max. operating voltage 115V
- Max. current level contact 0.5A
- Max. current temp contact 2.0A
- Contact load level contact 10VA
- Hysteresis 18°F

Options

- Any combination of three level temperature contacts
- Easy adjustable switch level
- Wide range of temperature switches
- Custom sizes, configuration and materials available upon request



Type	L	A
SLTS - 12	12.3" (312mm)	6.3" (160mm)
SLTS - 18	18.3" (464 mm)	12.3" (312 mm)
SLTS - SL	Custom Length	Custom Range