

Technical Data

PPC-12

Version with 6 sensor inputs

Measurement / Display

- Pressure in bar and PSI
- Temperature in °C and °F
- Volume flow in l/min and US GPM
- Rotational speed in RPM
- Digital LCD display: 128 x 64 Pixel
Visible area: 72 x 40 (2,84 x 1,58)
- Automatic numeral height adjustment
Numeral height: 4,2 (0,17) with eight-line display
- Data output for connection to PC
- Plastic housing made of fiberglass-reinforced PA
- 11-key membrane keyboard
- Electromagnetic compatibility (EMC):
Emitted interference: DIN EN 50081, Part 1
Interference immunity: DIN EN 50082, Part 2
- Auto Power Off (after 20 minutes)
- Battery charge display
- Display accuracy: < 0,25 % FS*

Measured Data Memory

- Variable storage interval (1 ms ... 10 s) or variable storage time (2 s ... 100 h)
- Manual and automatic triggering

Power Supply

- Power supply unit: 110/230 V AC (50/60 Hz)
- Rechargeable battery charging circuit
- Internal nickel-metal hybrid rechargeable battery
7,2 V / 700 mA/h
- Operating time with the rechargeable battery: approx. 5 hours
- Optionally with automobile adaptor 12 V ... 24 V DC

Software

A PC set, consisting of a PC adaptor (RS-232 serial connection, length: 2 m / 6,5 ft.) and the corresponding PC software, is included as standard with every PPC-12. The measured data and curves can be easily exported to Microsoft Excel®.

Sensor Inputs (5-pin)

- Automatic sensor detection
- Input signal: 0 V ... 3 V DC (R = 470 k)
- Frequency input via input jack I3
- Frequency range: 0,5 Hz ... 30 kHz
- Sampling rate: ≤ 1 ms
- Accuracy: < 0,3 % FS* ± 2 digits

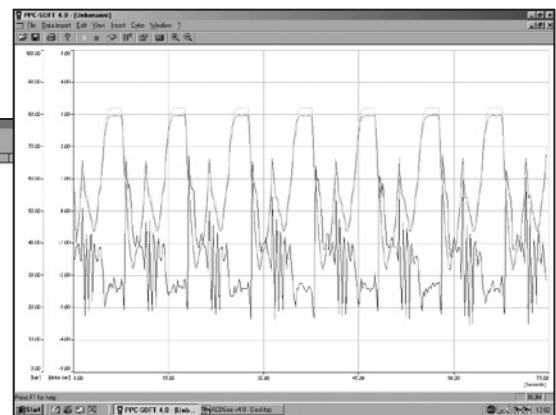
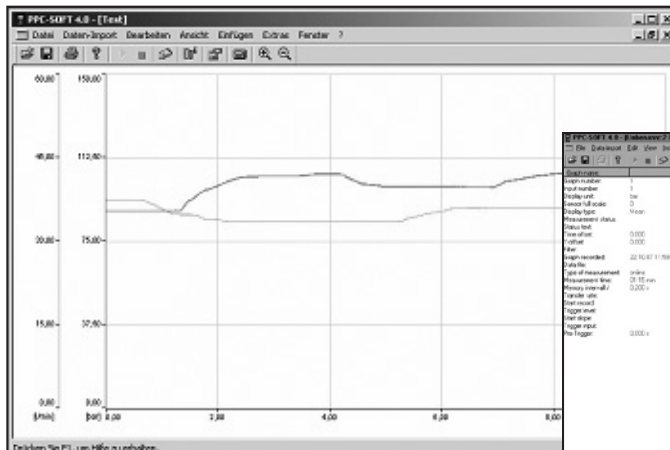
Data Output

- 4-pin, RS-232 interface
- Adjustable baud rate: 1.200 ... 38.400 PBS
- 8 data bits, 1 stop bit
- Online data transmission to a PC (200 ms)
- To USB with an optional RS-232 adaptor

General

- Ambient temperature: 0°C ... 50°C (32°F ... 122°F)
- Temperature error: < 0,02 % / °C
- Storage temperature: -25°C ... 60°C (-13°F ... 140°F)
- Relative humidity: < 80 %
- Safety class: EN 60529 - IP54
- Dimensions (L/W/H): 235 x 106 x 53 (9,25 x 4,17 x 2,09)
- Weight: 530 g (1,17 lbs.)

*FS = Full Scale



All dimensions in mm (inch)