

## Technical Data

PPC-06-plus    Version with 3 sensor inputs  
 PPC-08-plus    Version with 4 sensor inputs

### Measurement / Display

- Pressure in bar and PSI
- Temperature in °C and °F
- Volume flow in l/min and US GPM
- Rotational speed in RPM
- Digital LCD display: 128 x 64 Pixel  
Visible area: 72 x 40 (2,84 x 1,58)
- Automatic numeral height adjustment  
Numeral height: 6 mm (0,24) with eight-line display
- Data output for connection to PC
- Plastic housing made of fiberglass-reinforced PA
- 12-key membrane keyboard
- Electromagnetic compatibility (EMC):  
Emitted interference: DIN EN 50081, Part 1  
Interference immunity: DIN EN 50082, Part 2
- Auto Power Off (after 20 minutes)
- Battery charge display
- Display accuracy: < 0,25 % FS\*

### Measured Data Memory

- Variable storage interval (1 ms ... 10 s) or variable storage time (2 s ... 100 h)
- Manual and automatic triggering

### Power Supply

- Power supply unit: 110/230 V AC (50/60 Hz)
- Rechargeable battery charging circuit
- Internal nickel-metal hybrid rechargeable battery  
7,2 V / 700 mA/h
- Operating time with the rechargeable battery: approx. 8 hours
- Optionally with automobile adaptor 12 V ... 24 V DC

### Sensor Inputs (5-pin)

- Automatic sensor detection
- Input signal:            0 V ... 3 V DC (R = 470 k)
- Frequency range:    0,5 Hz ... 30 kHz
- Sampling rate:        1 ms
- Accuracy:              < 0,3 % FS\* ± 2 digits

### Data Output

- 4-pin
- integrated USB port (USB 2.0)
- Online data transmission to a PC  
Speed individually eligible (5 ms ... 60 s)

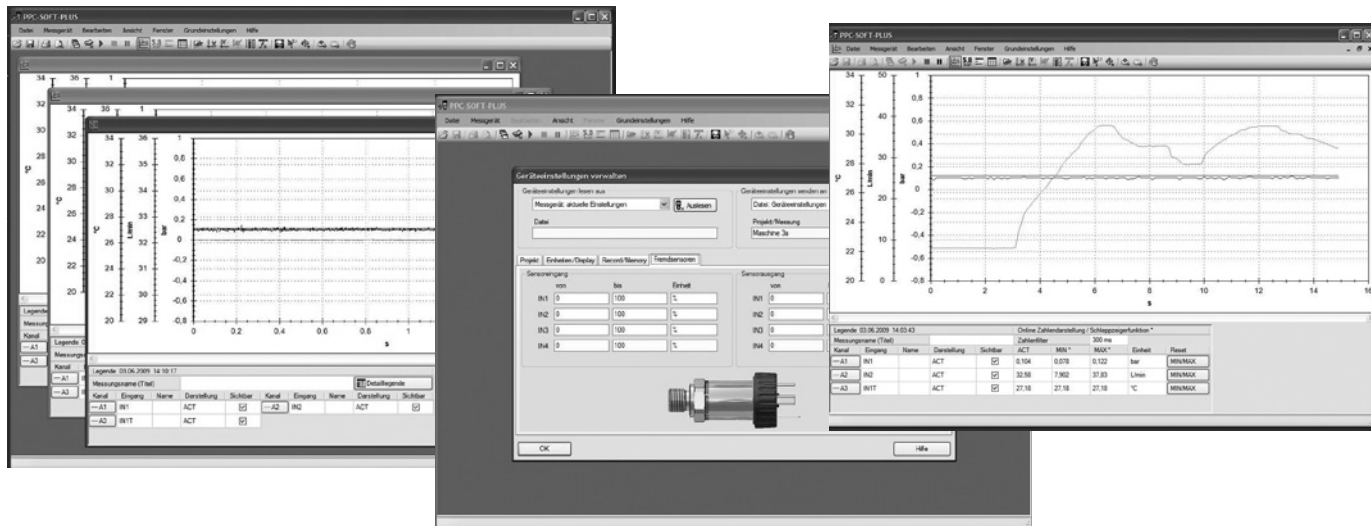
### General

- Ambient temperature:    0°C ... 50°C (32 °F ... 122 °F)
- Temperature error:      < 0,02 % / °C
- Storage temperature:    -25°C ... 60°C (-13°F ... 140°F)
- Relative humidity:      < 80 %
- Safety class:             EN 60529 - IP54
- Dimensions (L/W/H):    235 x 106 x 53  
(9,25 x 4,17 x 2,09)
- Weight                    530 g (1,17 lbs.)
- CE certified

\*FS = Full Scale

## Software

A PC set, consisting of a USB connecting lead, Length 1,5 m ( 4,9 ft.) and the corresponding PC software, is included as standard with every PPC-06-plus and PPC-08-plus. The measured data and curves can be easily exported to Microsoft Excel®.



All dimensions in mm (inch)