

Technical Data

PPC-04-B /2	Version with battery
PPC-04-A /2	Version with rechargeable battery
PPC-04-AP /2	Version with rechargeable battery and data output

Measurements/Display

- Pressure in bar and PSI
- Temperature in °C and °F
- Volume flow in l/min and US GPM
- Rotational speed in RPM
- Two-line LCD display (4-digit)
Numeral height: 8 (0,32)
- Data output for connecting to PC (PPC-04-AP /2 only)
- Plastic housing made of ABS in a rubber protective case with carrying strap and stand
- Auto Power Off (after 15 minutes)

Power Supply

- Power supply unit 110/230 V AC (50/60 Hz) (PPC-04-A/ 2 and PPC-04-AP/2)
- Internal rechargeable battery 9 V / 110 mA/h
- Operating time with the rechargeable battery: approx. 5 hours
- Optionally with automobile adaptor 12 V ... 24 V DC (PPC-04-A/ 2 and PPC-04-AP/2)

Sensor Inputs (5-pin)

- Automatic sensor recognition
- Input signal 0 V ... 3 V DC (R = 470 k)
- Sampling rate ≤ 2 ms
- Accuracy < 0,3% FS* ± 2 Digit

Data Output

- 4-pin, RS-232 interface
- Optionally with RS-232 adaptor to USB

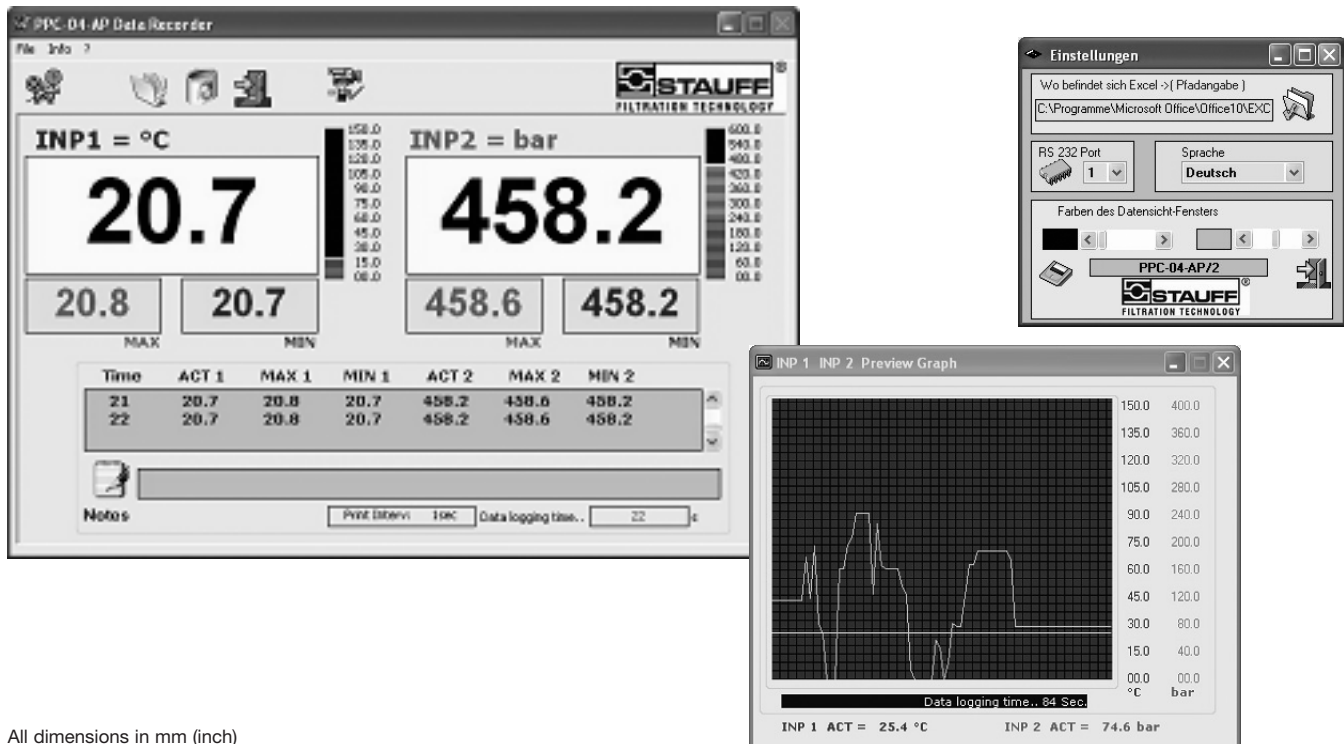
General

- Ambient temperature: 0°C ... 50°C (32°F ... 122°F)
- Storage temperature: -20°C ... 60°C (-4°F ... 140°F)
- Relative humidity: < 85 %
- Safety class: EN 60529 - IP54
- Dimensions (L/W/H): 145 x 70 x 40 (5,71 x 2,76 x 1,57)
- Weight 330 g (0,73 lbs.)

* FS = Full Scale

Software

An optional PC set is available for the PPC-04-AP /2, for connecting it to a PC. This set contains both a PC adaptor (RS-232 connection, length: 2 m / 6,5 ft.) and the corresponding PC software. The measured values can then easily be processed as a data series or a chart using Microsoft Excel®.



All dimensions in mm (inch)