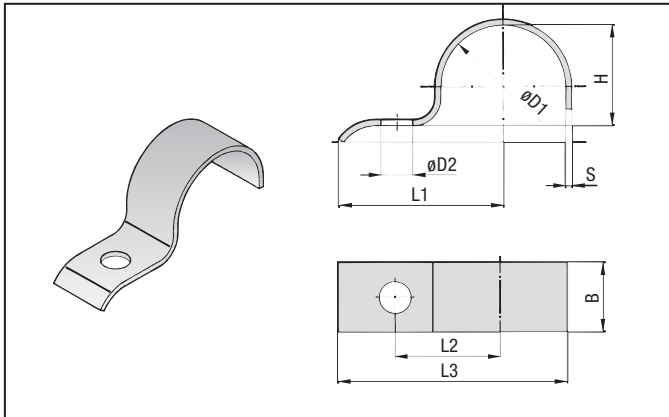


according to DIN 1592

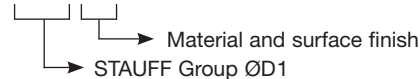


STAUFF Group ØD1	Dia. Range		L1		L2		L3		H		D2		B		S	
	mm	in	mm	in	mm	in	mm	in	mm	in	mm	in	mm	in	mm	in
7	5,5-7	0,22-0,28	22	0,87	14	0,55	27,5	1,08	5	0,20	6,6	16	0,63	2		
9	7-9	0,28-0,35	27	1,06	18	0,71	33,5	1,32	6	0,24	0,26	20	0,79	0,08		
13	9,5-13	0,37-0,51	40	1,57	25	0,98	49,5	1,95	9	0,35	11	25		3		
15,5	13-15,5	0,51-0,61	41	1,61	26	1,02	52	2,05	12	0,47						
19	15,5-19	0,61-0,75	43	1,69	28	1,10	55,5	2,19	15	0,59	0,43	0,98		0,12		
23	20-23	0,79-0,91	51	2,01	35	1,38	67	2,64	19	0,75	14	30		5		
26	23-26	0,91-1,02	52	2,05	36	1,42	70	2,76	22	0,87						
28,5	26-28,5	1,02-1,12	53	2,09	37	1,46	73	2,87	24	0,94						
31	28,5-31	1,12-1,22	55	2,17	39	1,54	75,5	2,97	27	1,06				1,18		
36	33-36	1,30-1,42	57	2,24	41	1,61	81	3,19	32	1,26		40				
39	36-39	1,42-1,54	59	2,32	43	1,69	83,5	3,29	34	1,34	0,55					
43	39-43	1,54-1,69	68	2,68	48	1,89	94,5	3,72	38	1,50	18					
46	43-46	1,69-1,81	70	2,76	50	1,97	98	3,86	41	1,61						0,20
49	46-49	1,81-1,93	73	2,87	53	2,09	105,5	4,15	44	1,73						8
52*	49-52	1,93-2,05	76	2,99	56	2,20	110	4,33	47	1,85						
58	53-58	2,09-2,28	78	3,07	58	2,28	115	4,53	52	2,05						
61	58-61	2,28-2,40	80	3,15	60	2,36	118,5	4,67	57	2,24	0,71	1,57		0,31		

* similar to DIN 1592

ORDER CODE

DIN 1592 - *** **

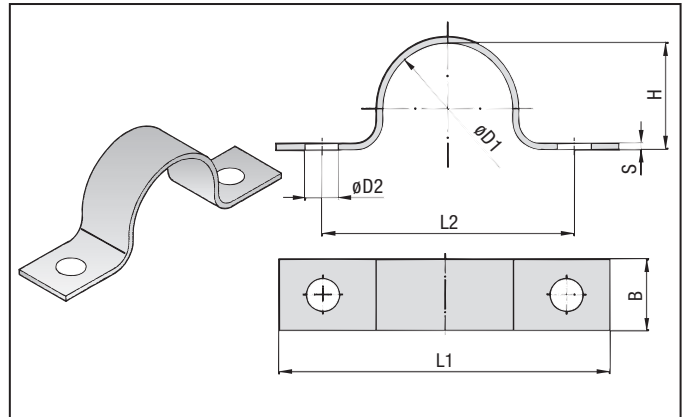


MATERIAL AND SURFACE FINISHING

STAUFF Group 7 – 49 **W3** carbon steel St37, zinc plated (Fe/Zn 8 C)
 STAUFF Group 52 – 61 **W1** carbon steel St37, untreated (Surface finishing on request only)

Other materials, surface finishes and diameters upon request.

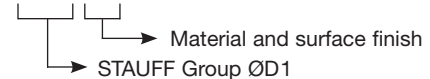
according to DIN 1593



STAUFF Group ØD1	Dia. Range		L1		L2		H		D2		B		S		
	mm	in	mm	in	mm	in	mm	in	mm	in	mm	in	mm	in	
7	5,5-7	0,22-0,28	44	1,73	28	1,10	5	0,20	6,6	16	0,63	2			
9	7-9	0,28-0,35	48	1,89	32	1,26	6	0,24		20					
13	9,5-13	0,37-0,51	52	2,05	36	1,42	9	0,35							
15,5	13-15,5	0,51-0,61	56	2,20	40	1,57	12	0,47							
19	15,5-19	0,61-0,75	60	2,36	44	1,73	15	0,59	0,26	0,79	0,08				
23	20-23	0,79-0,91	82	3,23	56	2,20	19	0,75	11	25	3				
26	23-26	0,91-1,02	84	3,31	58	2,28	22	0,87							
28,5	26-28,5	1,02-1,12	90	3,54	64	2,52	24	0,94							
31	28,5-31	1,12-1,22	106	4,17	80	3,15	32	1,26							
36	33-36	1,30-1,42	110	4,33	84	3,31	34	1,34	0,43	0,98	0,12				
39	36-39	1,42-1,54	120	4,72	88	3,46	38	1,50	14	30	5				
43	39-43	1,54-1,69	122	4,80	90	3,54	41	1,61							
46	43-46	1,69-1,81	142	5,59	110	4,33	52	2,05							
49	46-49	1,81-1,93	152	5,98	120	4,72	66	2,60	0,55	1,18					
58	53-58	2,09-2,28	176	6,93	136	5,35	72	2,83	18	40					
61	58-61	2,28-2,40	184	7,24	144	5,67	76	2,99							
71	67-71	2,64-2,80	198	7,80	158	6,22	85	3,35							
77	73-77	2,87-3,03	214	8,43	174	6,85	98	3,86							
81	77-81	3,03-3,19	220	8,66	180	7,09	104	4,09							
91	86-91	3,39-3,58	226	8,90	186	7,32	109	4,29	0,71	1,57	0,31				
103	99-103	3,90-4,06													
109	105-109	4,13-4,29													
115	110-115	4,33-4,53													

ORDER CODE

DIN 1593 - *** **



MATERIAL AND SURFACE FINISHING

STAUFF Group 7 – 77 **W3** carbon steel St37, zinc plated (Fe/Zn 8 C)
 STAUFF Group 81 – 115 **W1** carbon steel St37, untreated (Surface finishing on request only)

Other materials, surface finishes and diameters upon request.