

FEATURES

- compact design
- quick and easy installation
- vibration and noise reducing
- UV, ozone and weathering resistant

MATERIALS AND SURFACES

- **Clamp Body:** thermoplastic elastomer (87 Shore-A)
- **Weld Plate:** steel, phosphated (W2)
- **Hexagon Rail:** steel, untreated (W1)
- **Cover Plate and Accessories:** steel, zinc/nickel coated (W3)

Further materials and surface finishes are available upon request.

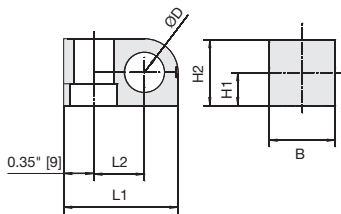
TYPES

- **Group 1, Group 2 and Group 3:** single-line clamps
- **Group 1D, Group 2D and Group 3D:** double-line clamps with identical diameters, also available with different diameters (upon request)

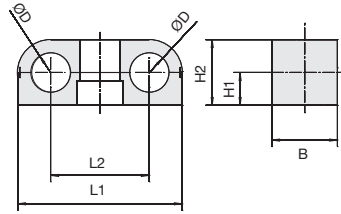
APPLICATIONS

- perfect for the vibration and noise reducing installation of pipes, tubes, hoses and cables for applications in which space is limited (Hydraulics and Pneumatics, Mechanical and Plant Engineering, Instrumentation)

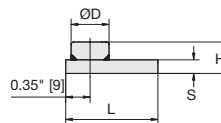
Clamp Body
Groups 1 to 3



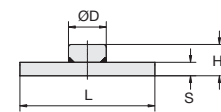
Clamp Body
Groups 1D to 3D



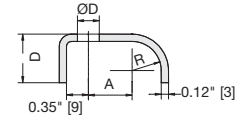
Weld Plate LBBU-SP
Groups 1 to 3



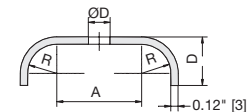
Weld Plate LBBU-SP
Groups 1D to 3D



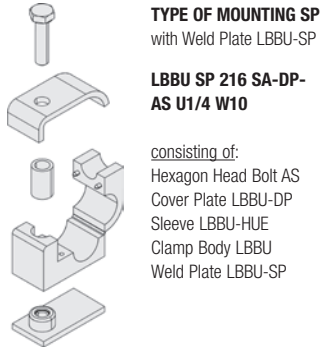
Cover Plate LBBU-DP
Groups 1 to 3



Cover Plate LBBU-DP
Groups 1D to 3D



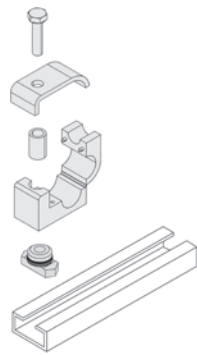
MATERIALS & SURFACES (Delivery Standard)				Clamp Body					Weld Plate LBBU-SP					Cover Plate LBBU-DP																		
				SA 87 Shore-A					W2 steel, phosphated					W3 steel, zinc/nickel coated																		
STAUFF LBBU Group #	Diameter ØD			Clamp Body LBBU SA "M-U7" 6	L1	L2	H1	H2	B	Thread	ØD	S	H	L	Width	ØD	A	R	D	Width												
	Outside Diameter Tube/Pipe/ Hose MM	Outside Diameter Tube IN	Nominal Bore Pipe IN																													
1	6.4	1/4		106.4	1.34" 34mm	0.59" 15mm	0.39" 10mm	0.79" 20mm	0.79" 20mm	1/4"-20 UNC M6	0.46" 11.8mm	0.12" 3mm	0.36" 9.1mm	1.34" 34mm	0.79" 20mm	0.28" 7mm	0.59" 15mm	0.39" 10mm	0.63" 16mm	0.79" 20mm												
	8	5/16		108						5/16"-18 UNC M8	0.55" 14mm	0.20" 5mm	0.41" 10.3mm			0.35" 9mm																
	9.5	3/8	1/8	109.5																												
	10			110																												
	12			112																												
	12.7	1/2		112.7																												
	4			204																												
2	6.4	1/4		206.4	1.54" 39mm	0.71" 18mm	0.47" 12mm	0.94" 24mm	0.79" 20mm	1/4"-20 UNC M6	0.46" 11.8mm	0.12" 3mm	0.36" 9.1mm	1.54" 39mm	0.79" 20mm	0.28" 7mm	0.71" 18mm	0.47" 12mm	0.79" 20mm	0.79" 20mm												
	8	5/16		208						5/16"-18 UNC M8	0.55" 14mm	0.20" 5mm	0.41" 10.3mm			0.35" 9mm																
	9.5	3/8	1/8	209.5																												
	10			210																												
	11			211																												
	12			212																												
	12.7	1/2	1/4	212.7																												
	13.5			213.5																												
	14			214																												
	15			215																												
	16	5/8		216																												
	17.2		3/8	217.2																												
	18			218																												
	19	3/4		219																												
20			220																													
21.3		1/2	321.3																													
3	22	7/8		322	2.26" 57.5mm	0.93" 23.5mm	0.79" 20mm	1.57" 40mm	1.18" 30mm	1/4"-20 UNC M6	0.46" 11.8mm	0.12" 3mm	0.36" 9.1mm	1.57" 40mm	1.18" 30mm	0.28" 7mm	0.93" 23.5mm	0.77" 19.5mm	1.10" 28mm	1.18" 30mm												
	23			323						5/16"-18 UNC M8	0.55" 14mm	0.20" 5mm	0.41" 10.3mm			0.35" 9mm																
	25.4	1		325.4																												
	28			328																												
	30			330																												
	32	1-1/4		332																												
	4.7			104.04																												
	6.6			106.06																												
	6.4/6.4	1/4		106.4/064																												
	8/8	5/16		108.008																												
	9.5/9.5	3/8		109.5/09.5																												
10/10		1/8	110/10																													
11/11			111/11																													
12/12			112/12																													
12.7/12.7	1/2		112.7/12.7																													
8/8	5/16		208.08																													
1D	9.5/9.5	3/8		209.5/09.5	1.97" 50mm	1.18" 30mm	0.39" 10mm	0.79" 20mm	0.79" 20mm	1/4"-20 UNC M6	0.46" 11.8mm	0.12" 3mm	0.36" 9.1mm	1.97" 50mm	0.79" 20mm	0.28" 7mm	1.18" 30mm	0.39" 10mm	0.63" 16mm	0.79" 20mm												
	10/10			210/10						5/16"-18 UNC M8	0.55" 14mm	0.20" 5mm	0.41" 10.3mm			0.35" 9mm																
	12.7/12.7	1/2		212.7/12.7																												
	13.5/13.5		1/4	213.5/13.5																												
	14/14			214/14																												
	15/15			215/15																												
	16/16			216/16																												
	17.2/17.2	5/8		217.2/17.2																												
	18/18		3/8	218/18																												
	19/19	3/4		219/19																												
	20/20			220/20																												
	21.3/21.3		1/2	321.3/21.3																												
	22/22	7/8		322/22																												
	23/23			323/23																												
25.4/25.4	1		325.4/25.4																													
28/28			328/28																													
30/30			330/30																													
32/32	1-1/4		332/32																													



TYPE OF MOUNTING SP
with Weld Plate LBBU-SP

LBBU SP 216 SA-DP-AS U1/4 W10

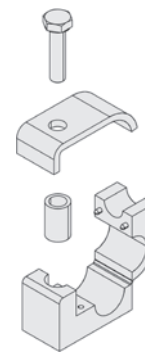
consisting of:
Hexagon Head Bolt AS
Cover Plate LBBU-DP
Sleeve LBBU-HUE
Clamp Body LBBU
Weld Plate LBBU-SP



TYPE OF MOUNTING SM
with Hexagon Rail Nut SM

LBBU SM 216 SA-DP-AS U1/4 W3

consisting of:
Hexagon Head Bolt AS
Cover Plate LBBU-DP
Sleeve LBBU-HUE
Clamp Body LBBU
Channel Rail Nut SM
Mounting Rail has to be ordered separately

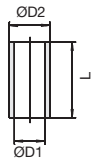


TYPE OF MOUNTING PM
for Panel Mounting *

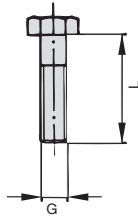
LBBU PM 216 SA-DP-AS U1/4 W3

consisting of:
Hexagon Head Bolt AS
Cover Plate LBBU-DP
Sleeve LBBU-HUE
Clamp Body LBBU
without Weld Plate
without Hexagon Rail Nut

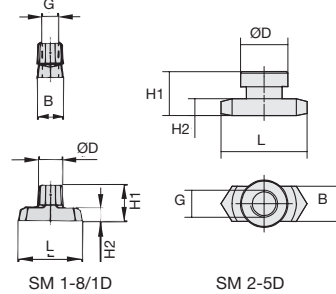
Sleeve LBBU-HUE



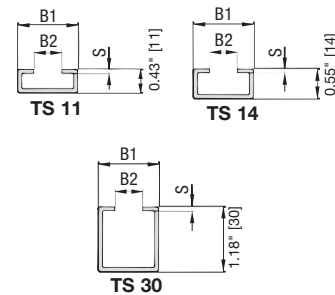
Hexagon Head Bolt AS
DIN EN 4014/4017 (DIN 931/933)



Hexagon Rail Nut SM
identical to Twin Series Hexagon Rail Nut according to DIN 3015



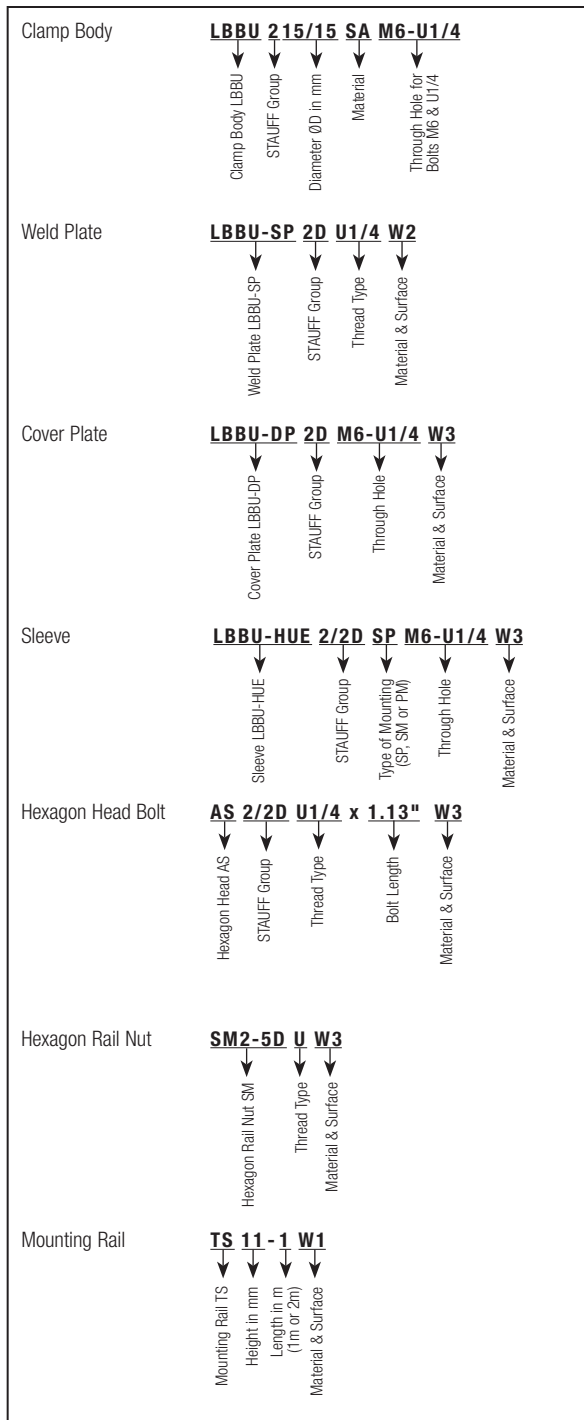
Mounting Rail TS



STAUFF LBBU Group #	Bolt Size/Thread G	Sleeve LBBU-HUE					Hexagon Head Bolt AS			Hexagon Rail Nut SM					Mounting Rail TS																											
		W3 steel, zinc/nickel coated					W3 steel, zinc/nickel coated			W3 steel, zinc/nickel coated					W1 steel, untreated																											
		ØD1	ØD2	L for SP Weld Plate	L for SM Rail Mount	L for PM Panel Mount	L for SP Weld Plate	L for SM Rail Mount	L for PM Panel Mount	L	B	H1	H2	ØD	TS#	B1	B2	S																								
1	1/4"-20 UNC M6	0.28" 7mm	0.39" 10mm	0.50" 12.7mm	0.48" 12.1mm	0.74" 18.8mm	1" 25mm	1" 25mm	1.25" 30mm	1.00" 25.5mm	0.40" 10.2mm	0.56" 14.2mm	0.22" 5.5mm	0.47" 12mm	TS11 TS14 TS30	1.10" 28mm	0.43" 11mm	0.08" 2mm																								
	5/16"-18 UNC M8	0.35" 9mm	0.47" 12mm	0.53" 13.5mm	0.50" 12.8mm	1" 25mm	1" 25mm	1.25" 30mm	0.41" 10.4mm		0.51" 13mm	0.20" 5mm	0.55" 14mm																													
2	1/4"-20 UNC M6	0.28" 7mm	0.39" 10mm	0.66" 16.7mm	0.63" 16.1mm	0.89" 22.7mm	1.13" 28mm	1.13" 28mm	1.38" 35mm		0.40" 10.2mm	0.56" 14.2mm	0.22" 5.5mm	0.47" 12mm					TS11 TS14 TS30	1.10" 28mm	0.43" 11mm	0.08" 2mm																				
	5/16"-18 UNC M8	0.35" 9mm	0.47" 12mm	0.69" 17.5mm	0.66" 16.8mm	1.13" 28mm	1.13" 28mm	1.38" 35mm	0.41" 10.4mm		0.51" 13mm	0.20" 5mm	0.55" 14mm																													
3	1/4"-20 UNC M6	0.28" 7mm	0.39" 10mm	1.32" 33.5mm	1.29" 32.6mm	1.53" 38.8mm	1.75" 45mm	1.75" 45mm	2.00" 50mm		1.00" 25.5mm	0.40" 10.2mm	0.56" 14.2mm	0.22" 5.5mm									0.47" 12mm	TS11 TS14 TS30	1.10" 28mm	0.43" 11mm	0.08" 2mm															
	5/16"-18 UNC M8	0.35" 9mm	0.47" 12mm	1.32" 33.5mm	1.29" 32.6mm	1.53" 38.8mm	1.75" 45mm	1.75" 45mm	2.00" 50mm			0.41" 10.4mm	0.51" 13mm	0.20" 5mm									0.55" 14mm																			
1D	1/4"-20 UNC M6	0.28" 7mm	0.39" 10mm	0.50" 12.7mm	0.48" 12.1mm	0.74" 18.8mm	1" 25mm	1" 25mm	1.25" 30mm			1.00" 25.5mm	0.40" 10.2mm	0.56" 14.2mm									0.22" 5.5mm					0.47" 12mm	TS11 TS14 TS30	1.10" 28mm	0.43" 11mm	0.08" 2mm										
	5/16"-18 UNC M8	0.35" 9mm	0.47" 12mm	0.53" 13.5mm	0.50" 12.8mm	1" 25mm	1" 25mm	1.25" 30mm	0.41" 10.4mm				0.51" 13mm	0.20" 5mm									0.55" 14mm																			
2D	1/4"-20 UNC M6	0.28" 7mm	0.39" 10mm	0.66" 16.7mm	0.63" 16.1mm	0.89" 22.7mm	1.13" 28mm	1.13" 28mm	1.38" 35mm				1.00" 25.5mm	0.40" 10.2mm									0.56" 14.2mm					0.22" 5.5mm					0.47" 12mm	TS11 TS14 TS30	1.10" 28mm	0.43" 11mm	0.08" 2mm					
	5/16"-18 UNC M8	0.35" 9mm	0.47" 12mm	0.69" 17.5mm	0.66" 16.8mm	1.13" 28mm	1.13" 28mm	1.38" 35mm	0.41" 10.4mm					0.51" 13mm									0.20" 5mm					0.55" 14mm														
3D	1/4"-20 UNC M6	0.28" 7mm	0.39" 10mm	1.32" 33.5mm	1.29" 32.6mm	1.53" 38.8mm	1.75" 45mm	1.75" 45mm	2.00" 50mm					1.00" 25.5mm									0.40" 10.2mm					0.56" 14.2mm					0.22" 5.5mm					0.47" 12mm	TS11 TS14 TS30	1.10" 28mm	0.43" 11mm	0.08" 2mm
	5/16"-18 UNC M8	0.35" 9mm	0.47" 12mm	1.32" 33.5mm	1.29" 32.6mm	1.53" 38.8mm	1.75" 45mm	1.75" 45mm	2.00" 50mm														0.41" 10.4mm					0.51" 13mm					0.20" 5mm					0.55" 14mm				

* Note: PM bolt lengths designed for a substructured integrated thread.

ORDERING CODE EXAMPLES



MATERIAL - CLAMP BODY

SA thermoplastic elastomer (87 Shore-A)

MATERIALS & SURFACES - METAL PARTS

W1 steel, untreated

W2 steel, phosphated

W3 steel, zinc/nickel coated

W10 weld plate phosphated, all other parts zinc plated

THREADS AND THROUGH HOLES

U1/4 UNC Thread 1/4"-20 UNC for parts without thread: through hole suitable for 1/4"-20 UNC

M6 Metric Thread M6 for parts without thread: through hole suitable for M6

U5/16 UNC Thread 5/16"-18 for parts without thread: through hole suitable for 5/16"-18 UNC

M8 Metric Thread M8 for parts without thread: through hole suitable for M8