

## Technical Characteristics

- Electron Beam Welded Construction
- High Strength Alloy Steel Shell
- Compact Design
- Operating Pressure to 3600 PSI (250 Bar)
- Capacity up to 3.5 Liters
- Hydrin (ECO) Diaphragm Material (Standard)
- Operating Temperature Range -40° to +80°C (-40° to +170°F)
- Low Permeation Coefficient
- Up to 1:8 Compression Ratio (Precharge/Maximum Working)
- UNF Oil Port Connection (Standard)
- Conforms to CE97/23
- Corrosion Resistant Black Gloss Finish
- Metric Gas Valve (Standard)



## Options

### Gas Port

- Precharged Hermetically Sealed (non-rechargeable)
- US Style Gas Valve

### Oil Port

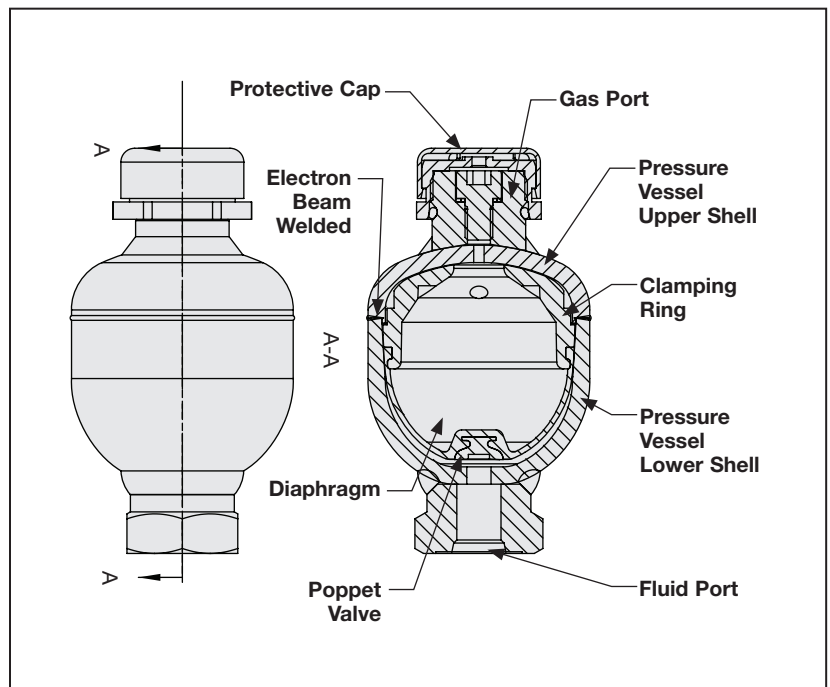
- BSP, Metric, Male/Female Metric Combination, ORFS

### Diaphragm Material

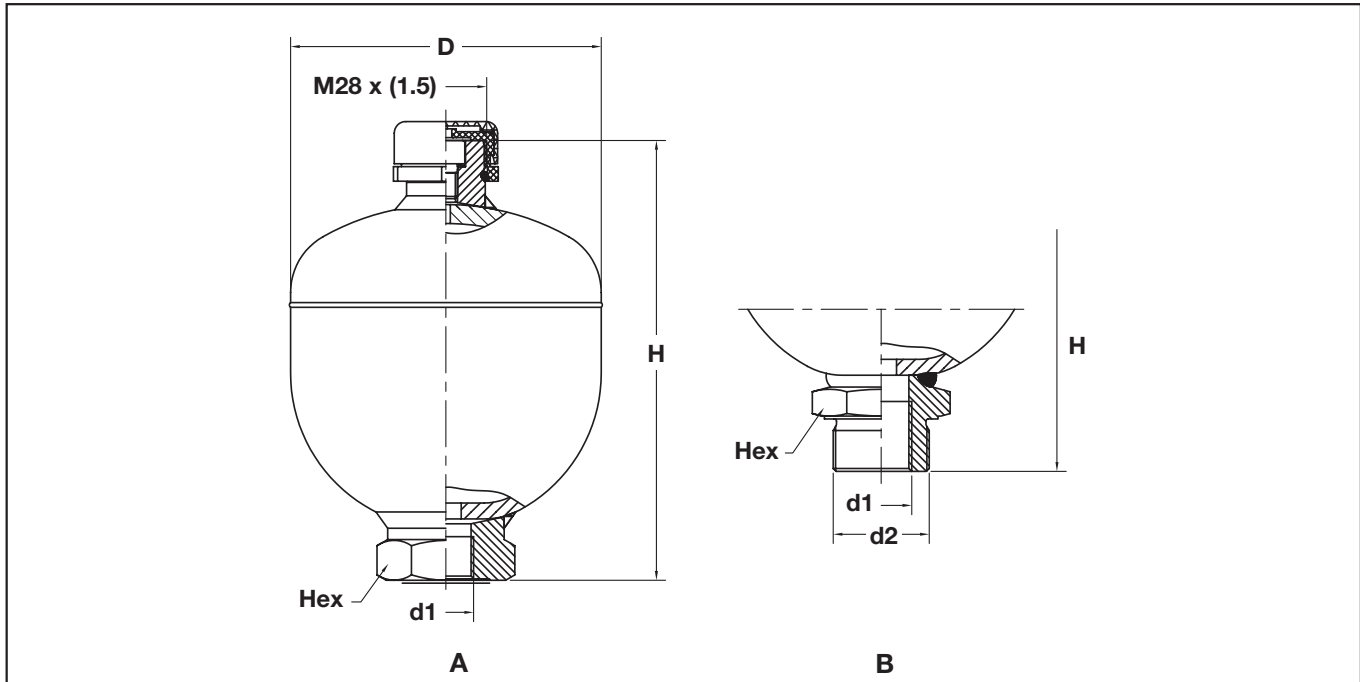
- Nitrile (NBR) Butyl (UR) Viton (FKM)
- Low Pressure Construction

## WHY USE A DIAPHRAGM ACCUMULATOR?

- Compact & Lightweight Design
- Fast Response Time
- Cost Effective
- Supplements Pump Flow
- Extends System Life
- Absorbs Shock
- Contamination Tolerant



## Dimensions



Stauff Part Number	Gas Volume liters	Max. Pressure	Comp. Ratio* <sub>1</sub>	Diaphragm Material	Gasport Design* <sub>2</sub>	Oilport			Overall Dimensions			
						Female	Hex		H		D	
						D1	mm	in	mm	in	mm	in
STDA-007-ECO-P4-U-M-N-1	0.075	250	1:8	ECO	M28 x 1.5	9/16-18 UNF	32	1.25	111	4.35	64	2.52
STDA-016-ECO-P4-U-M-N-1	0.16	250							119	4.69	75	2.95
STDA-032-ECO-P3-U-M-N-1	0.32	210							134	5.28	92.5	3.64
STDA-050-ECO-P3-U-M-N-1	0.5	210				3/4-16 UNF	41	1.61	151	5.95	106.7	4.20
STDA-075-ECO-P3-U-M-N-1	0.75	210							166	6.54	121.5	4.78
STDA-100-ECO-P3-U-M-N-1	1	210							180	7.09	136.2	5.06
STDA-140-ECO-P3-U-M-N-1	1.4	210							191	7.52	147.3	5.80
STDA-200-ECO-P4-U-M-N-1	2	250	1 1/16-12 UNF	50	1.97	252	9.92	156	6.14			
STDA-280-ECO-P4-U-M-N-1	2.8	250				1:6	267	10.51	174	6.85		
STDA-350-ECO-P4-U-M-N-1	3.5	250				1:4	306	12.05	174	6.85		

\*1 Compression Ratio = Pre-charge pressure : Maximum working pressure. Exceeding the compression ratio may cause diaphragm to fail.

\*2 Hermetically sealed and "shradar valve" options available on special request. (Minimum order quantities may be required)

## Diaphragm Accumulators Ordering Code

**STDA - 007 - ECO - P4 - U - M - N - 1**

Model Code	
STDA	Stauff Diaphragm Accumulators

Size / Capacity	
007	0.075 liters
016	0.16 liters
032	0.32 liters
050	0.50 liters
075	0.75 liters
100	1.00 liters
140	1.40 liters
200	2.00 liters
280	2.80 liters
350	3.50 liters

Diaphragm Material	
ECO	Hydrin (Standard)
NBR	Nitril (NBR)
Other materials available for special applications	

Pressure Rating	
Size	Capacity
P1	160 Bar (2,300 PSI)
P3	210 Bar (3,000 PSI)
P4	250 Bar (3,600 PSI)
P5	350 Bar (5,000 PSI)

Fluid Port Connection	
U	SAE O-Ring Boss
B	BSPP
D	Dual Thread: BSP Female & Metric Male

Gas Port Connection	
M	M28 x 1.5 (Standard)
X	US Style Valve
H	Hermetically Sealed

**Non Repairable**

Design Series - Precharge	
	Pressure in bar

ACCESSORIES