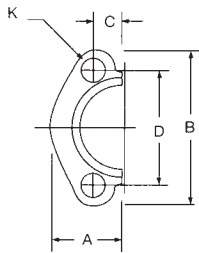


Specifications

- Carbon Steel Forging
- Includes Bolts, Washers, and O-Rings
- 3000 PSI (200 Bar) Code 61 or 6000 PSI (400 Bar) Code 62

Options

- Complete kits or loose flange halves available



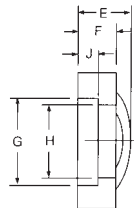
Dimensions / Ordering Information

Code 61 Split Flange Kits (Kits include Flanges, Bolts, Washers and O-rings)																							
Part No.	Flange Size	A		B		C		D		E		F		G		H		J		K		Working Press Max.	O-ring Dash #
		mm	in	mm	in	mm	in	mm	in	mm	in	mm	in	mm	in	mm	in	mm	in	mm	in		
SF3-12	.75	25	.98	65	2.56	11	.438	48	1.875	22	.88	14	.56	39	1.531	32	1.265	6	.245	10	.406	5000	-214
SF3-16	1.00	28	1.11	70	2.75	13	.515	52	2.062	24	.94	16	.62	45	1.781	38	1.515	7	.295	10	.406	5000	-219
SF3-20	1.25	35	1.39	79	3.12	15	.594	59	2.312	22	.88	16	.62	52	2.031	44	1.720	7	.295	12	.469	4000	-222
SF3-24	1.50	40	1.58	93	3.69	18	.703	70	2.750	25	1.00	14	.56	61	2.406	51	2.000	7	.295	13	.531	3000	-225
SF3-32	2.00	47	1.86	102	4.00	21	.844	78	3.062	26	1.03	16	.62	72	2.844	63	2.470	9	.355	13	.531	3000	-228
SF3-40	2.50	53	2.09	114	4.50	25	1.000	89	3.500	38	1.50	19	.75	85	3.344	75	2.950	9	.355	13	.531	2500	-232
SF3-48	3.00	64	2.53	135	5.31	31	1.219	106	4.188	41	1.62	22	.88	102	4.031	91	3.580	9	.355	16	.656	2000	-237

Note: "Flange Pairs" can be ordered without hardware; specify "no hardware".

Code 61 Split Flange (Individual Half Only)																							
Part No.	Flange Size	A		B		C		D		E		F		G		H		J		K		Working Press Max.	O-ring Dash #
		mm	in	mm	in	mm	in	mm	in	mm	in	mm	in	mm	in	mm	in	mm	in	mm	in		
PSF3-12	.75	25	.98	65	2.56	11	.438	48	1.875	22	.88	14	.56	39	1.531	32	1.265	6	.245	10	.406	5000	-214
PSF3-16	1.00	28	1.11	70	2.75	13	.515	52	2.062	24	.94	16	.62	45	1.781	38	1.515	7	.295	10	.406	5000	-219
PSF3-20	1.25	35	1.39	79	3.12	15	.594	59	2.312	22	.88	16	.62	52	2.031	44	1.720	7	.295	12	.469	4000	-222
PSF3-24	1.50	40	1.58	93	3.69	18	.703	70	2.750	25	1.00	14	.56	61	2.406	51	2.000	7	.295	13	.531	3000	-225
PSF3-32	2.00	47	1.86	102	4.00	21	.844	78	3.062	26	1.03	16	.62	72	2.844	63	2.470	9	.355	13	.531	3000	-228
PSF3-40	2.50	53	2.09	114	4.50	25	1.000	89	3.500	38	1.50	19	.75	85	3.344	75	2.950	9	.355	13	.531	2500	-232
PSF3-48	3.00	64	2.53	135	5.31	31	1.219	106	4.188	41	1.62	22	.88	102	4.031	91	3.580	9	.355	16	.656	2000	-237

Note: "Flange Pairs" can be ordered without hardware; specify "no hardware".

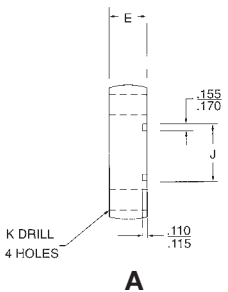


Code 62 Split Flange Kits (Kits include Flanges, Bolts, Washers and O-rings)																							
Part No.	Flange Size	A		B		C		D		E		F		G		H		J		K		Working Press Max.	O-ring Dash #
		mm	in	mm	in	mm	in	mm	in	mm	in	mm	in	mm	in	mm	in	mm	in	mm	in		
SF6-12	.75	29	1.14	71	2.81	12	.469	51	2.000	28	1.12	19	.75	42	1.656	32	1.280	8	.325	10	.406	6000	-214
SF6-16	1.00	34	1.33	81	3.19	14	.547	57	2.250	33	1.31	24	.94	48	1.906	38	1.530	9	.355	12	.469	6000	-219
SF6-20	1.25	38	1.48	95	3.75	16	.625	67	2.625	38	1.50	27	1.06	55	2.156	44	1.750	10	.385	13	.531	6000	-222
SF6-24	1.50	46	1.83	113	4.44	18	.719	79	3.125	43	1.69	30	1.19	64	2.531	51	2.030	12	.475	17	.656	6000	-225
SF6-32	2.00	56	2.20	133	5.25	22	.875	97	3.812	52	2.06	37	1.44	80	3.156	63	2.660	12	.475	20	.781	6000	-228

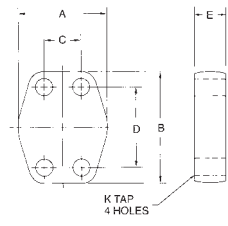
Code 62 Split Flange Kits (Individual Half Only)																							
Part No.	Flange Size	A		B		C		D		E		F		G		H		J		K		Working Press Max.	O-ring Dash #
		mm	in	mm	in	mm	in	mm	in	mm	in	mm	in	mm	in	mm	in	mm	in	mm	in		
PSF6-12	.75	29	1.14	71	2.81	12	.469	51	2.000	28	1.12	19	.75	42	1.656	32	1.280	8	.325	10	.406	6000	-214
PSF6-16	1.00	34	1.33	81	3.19	14	.547	57	2.250	33	1.31	24	.94	48	1.906	38	1.530	9	.355	12	.469	6000	-219
PSF6-20	1.25	38	1.48	95	3.75	16	.625	67	2.625	38	1.50	27	1.06	55	2.156	44	1.750	10	.385	13	.531	6000	-222
PSF6-24	1.50	46	1.83	113	4.44	18	.719	79	3.125	43	1.69	30	1.19	64	2.531	51	2.030	12	.475	17	.656	6000	-225
PSF6-32	2.00	56	2.20	133	5.25	22	.875	97	3.812	52	2.06	37	1.44	80	3.156	63	2.660	12	.475	20	.781	6000	-228

3000 PSI Blanking Flange																					
O-Ring Part No. Fig. A	Flat Face Part No. Fig. B	Pad Size	A		B		C		D		E		J Min		J Max		K Drill Dia.		K Tap UN-2B		O-Ring Dash #
			mm	in	mm	in	mm	in	mm	in	mm	in	mm	in	mm	in	mm	in	mm	in	
SP36-12-12	SP37-12-12	.750	52	2.063	65	2.563	22	.875	48	1.875	19	.750	32	1.250	32	1.255	10	.406	3/8-16	-214	
SP36-16-16	SP37-16-16	1.000	59	2.313	70	2.750	26	1.031	52	2.063	22	.880	40	1.560	40	1.565	10	.406	3/8-16	-219	
SP36-20-20	SP37-20-20	1.250	73	2.875	79	3.125	30	1.188	59	2.312	24	.940	45	1.755	45	1.755	12	.469	7/16-14	-222	
SP36-24-24	SP37-24-24	1.500	83	3.250	94	3.688	36	1.406	70	2.750	30	1.190	54	2.115	54	2.125	13	.531	1/2-13	-225	
SP36-32-32	SP37-32-32	2.000	97	3.813	102	4.000	43	1.688	78	3.063	35	1.380	63	2.490	64	2.500	13	.531	1/2-13	-228	
SF36-40-40	SP37-40-40	2.500	109	4.281	114	4.500	51	2.000	89	3.500	44	1.750	76	2.995	76	3.005	13	.531	1/2-13	-232	
SF36-48-48	SP37-48-48	3.000	131	5.156	135	5.313	62	2.438	106	4.188	54	2.120	92	3.615	92	3.625	17	.656	5/8-11	-237	

6000 PSI Blanking Flange																					
O-Ring Part No. Fig. A	Flat Face Part No. Fig. B	Pad Size	A		B		C		D		E		J Min		J Max		K Drill Dia.		K Tap UN-2B		O-Ring Dash #
			mm	in	mm	in	mm	in	mm	in	mm	in	mm	in	mm	in	mm	in	mm	in	
SP38-12-12	SP39-12-12	.750	60	2.380	71	2.810	24	.937	51	2.000	32	1.250	32	1.250	32	1.255	10	.406	3/8-16	-214	
SP38-16-16	SP39-16-16	1.000	70	2.750	81	3.190	28	1.093	57	2.250	38	1.500	40	1.560	40	1.565	12	.469	7/16-14	-219	
SP38-20-20	SP39-20-20	1.250	78	3.060	95	3.750	32	1.250	67	2.625	38	1.500	45	1.755	45	1.755	13	.531	1/2-13	-222	
SP38-24-24	SP39-24-24	1.500	95	3.750	113	4.440	36	1.437	79	3.125	44	1.750	54	2.115	54	2.125	17	.656	5/8-11	-225	
SP38-32-32	SP39-32-32	2.000	114	4.500	133	5.250	44	1.750	97	3.812	44	1.750	63	2.490	64	2.500	20	.781	3/4-10	-228	



A



B