

## Specifications

- Carbon Steel Forging
- Socket Tube
- SAE 3000 PSI (200 bar) Code 61 or 6000 PSI (400 bar) Code 62

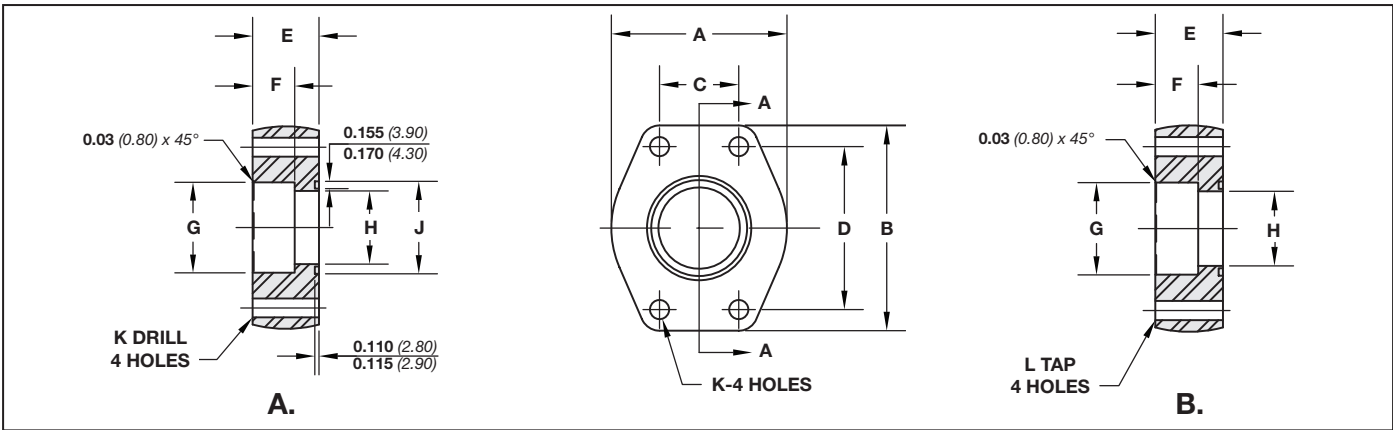
## Options

- Standard and Companion Flanges
- Reducing Options Available



## Dimensions / Ordering Information

Dimensions in mm (inch)



### Code 61 Flat Socket Weld - Tube

Part No. O-Ring Fig. A	Part No. Flat Face Fig. B	Tube Size	Pad Size	A		B		C		D		E		F		G		H		J		K		L UNC-2B		Mounting Hardware	
				mm	in	mm	in	mm	in	mm	in	mm	in	mm	in	mm	in	mm	in	mm	in	mm	in	mm	in	in	O-Ring
SP6-12-12	SP62-12-12	.75	.75	52	2.060	65	2.560	22	.875	48	1.875	19	.750	14	.560	19	.752	16	.625	19	.752	10	.406	3/8-16	214	3/8-16X1.50	
SP6-16-16	SP62-16-16	1.00	1.00	59	2.310	70	2.750	26	1.031	52	2.062	22	.880	16	.630	25	1.002	22	.875	25	1.002	10	.406	3/8-16	219	3/8-16X1.75	
SP6-20-20	SP62-20-20	1.25	1.25	73	2.880	79	3.120	30	1.188	59	2.312	24	.940	18	.690	32	1.252	29	1.125	32	1.252	12	.469	7/16-14	222	7/16-14X1.75	
SP6-24-24	SP62-24-24	1.50	1.50	83	3.250	94	3.690	36	1.406	70	2.750	30	1.190	19	.750	38	1.502	35	1.375	38	1.502	13	.531	1/2-13	225	1/2-13X2.25	
SP6-32-32	SP62-32-32	2.00	2.00	97	3.810	102	4.000	43	1.688	78	3.062	35	1.380	22	.875	51	2.002	48	1.875	51	2.002	13	.531	1/2-13	228	1/2-13X2.50	

### Code 62 Flat Socket Weld - Tube

Part No. O-Ring Fig. A	Part No. Flat Face Fig. B	Tube Size	Pad Size	A		B		C		D		E		F		G		H		J		K		L UNC-2B		Mounting Hardware	
				mm	in	mm	in	mm	in	mm	in	mm	in	mm	in	mm	in	mm	in	mm	in	mm	in	mm	in	in	O-Ring
SP58-12-12	SP63-12-12	.75	.75	64	2.50	75	2.95	24	.937	51	2.000	32	1.250	14	.560	19	.752	16	.625	19	.752	10	.406	3/8-16	214	3/8-16X2.00	
SP58-16-16	SP63-16-16	1.00	1.00	70	2.75	81	3.19	28	1.093	57	2.250	38	1.500	16	.630	25	1.002	22	.875	25	1.002	12	.492	7/16-14	219	7/16-14X2.50	
SP58-20-20	SP63-20-20	1.25	1.25	78	3.06	95	3.75	32	1.250	67	2.625	38	1.500	18	.690	32	1.252	29	1.125	32	1.252	13	.531	1/2-13	222	1/2-13X2.50	
SP58-24-24	SP63-24-24	1.50	1.50	95	3.75	113	4.44	36	1.437	79	3.125	44	1.750	19	.750	38	1.502	35	1.375	38	1.502	17	.656	5/8-11	225	5/8-11X3.00	
SP58-32-32	SP63-32-32	2.00	2.00	114	4.50	133	5.25	44	1.750	97	3.812	44	1.750	22	.875	51	2.002	48	1.875	51	2.002	20	.781	3/4-10	228	3/4-10X3.00	

ACCESSORIES