

Specifications

- Stainless Steel Mesh 125µ—100 Mesh
- Temperature to 250°F (+120°C)
- Epoxy Bonded for Compatibility with most Petroleum & Mineral Based Fluids.
- Aluminum Threaded End Cap, other Components Steel Zinc Plated

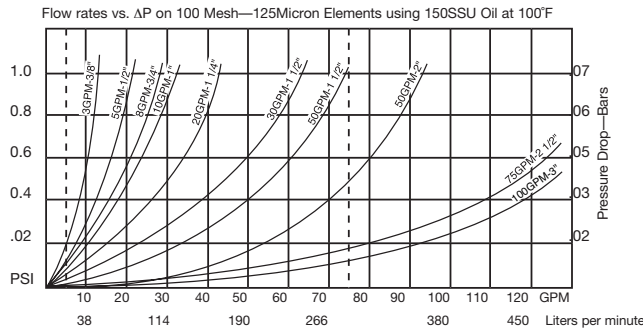
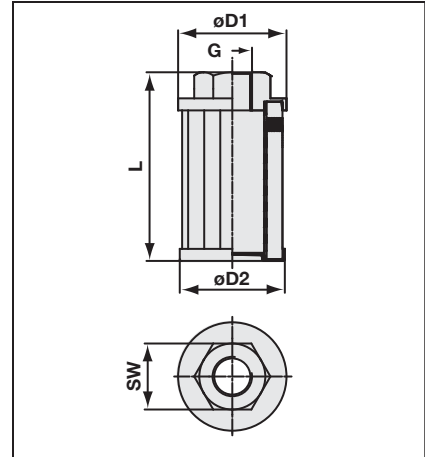
Options

- No By-pass or 3 PSI By-pass Available
- Custom Sizes on Request
- Custom Mesh on Request (60µ or 250µ)
- Available in BSP on Request

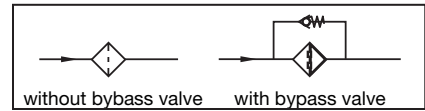


Technical Information

Dimensions



Hydraulic Symbol



Dimensions / Ordering Information

Group Size			Port (G)						Diameter						Wt. (lb.)	
Upper End Diameter	Thread Code	Element Length	(NPT)	gpm	l/min	in ²	cm ²	mm	in	mm	in	mm	in	mm		in
050	- N06F	- 090	3/8"	3	11	20	130	90	3.5	50	2.0	49	1.9	26	1.0	0.3
050	- N08F	- 105	1/2"	5	19	25	161	105	4.1	50	2.0	49	1.9	26	1.0	0.4
068	- N12F	- 105	3/4"	8	31	62	400	105	4.1	68	2.7	66	2.6	34	1.3	0.5
068	- N16F	- 140	1"	10	38	110	710	139	5.5	68	2.7	66	2.6	42	1.7	0.7
088	- N20F	- 195	1 1/4"	20	88	162	1050	195	7.7	88	3.5	85	3.3	60	2.4	1.0
088	- N24F	- 226	1 1/2"	30	120	225	1450	226	8.9	88	3.5	85	3.3	60	2.4	1.2
088	- N24F	- 260	1 1/2"	50	198	340	2190	260	10.0	88	3.5	85	3.3	60	2.4	1.4
088	- N32F	- 260	2"	50	198	340	2190	260	10.0	88	3.5	85	3.3	70	2.8	1.8
150	- N40F	- 213	2 1/2"	75	283	400	2580	213	8.4	150	5.9	145	5.7	90	3.5	2.3
150	- N48F	- 272	3"	100	379	500	3230	272	10.7	150	5.9	145	5.7	100	3.5	3.0

Ordering Code

SUS - A - 088 - N24F - 226 - 125 - 0

Type
SUS Suction Strainer

Material Threaded End Cap
A Aluminium (only for NPT thread, see table)

Group Size
see table above, column group size

Bypass Option
0 without bypass (standard)
3 integrated bypass valve (0,2 bar / 3 PSI)

Micron Rating
060 60 µm (on request)
125 125 µm (standard)
250 250 µm (on request)

ACCESSORIES