

Specifications

- Carbon Steel Forging
- 3000 PSI (200 bar) SAE Code 61

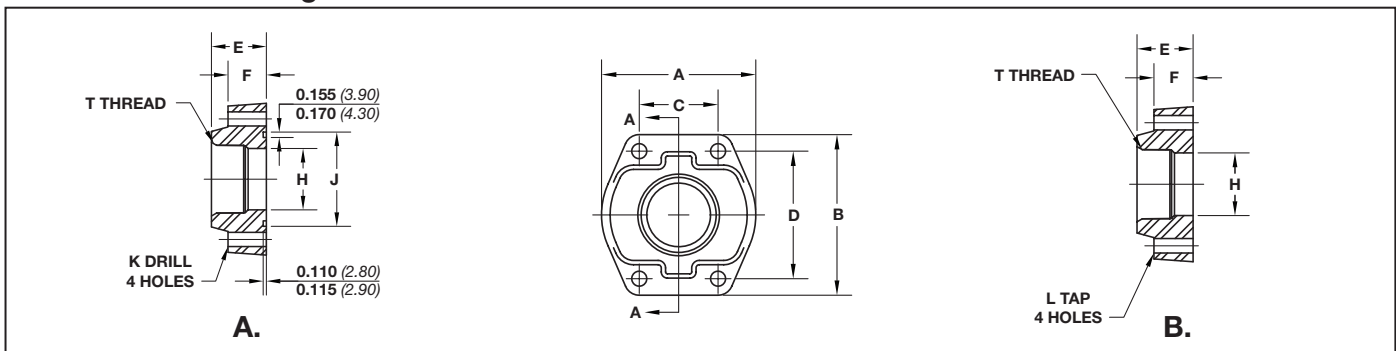
Options

- NPT or SAE Thread
- Standard and Companion Flanges
- Reducing Options Available.



Dimensions / Ordering Information

Dimensions in mm (inch)



Code 61 NPTF Thread

Part No. O-Ring Fig. A	Part No. Flat Face Fig. B	Port Size	Pad Size	A		B		C		D		E		F		H		T NPTF		K		L UNC-2B		Mounting Hardware	
				mm	in	mm	in	mm	in	mm	in	mm	in	mm	in	mm	in	mm	in	in	mm	in	in	O-Ring	SHCS
SP43-8-8	SP104-8-8	.50	.50	46	1.81	54	2.13	17	.688	38	1.500	36	1.42	16	.63	13	.502	1/2-14	9	.344	5/16-18	210	5/16-18X1.25		
SP43-12-12	SP104-12-12	.75	.75	50	1.97	65	2.56	22	.875	48	1.875	36	1.42	18	.71	19	.752	3/4-14	10	.406	3/8-16	214	3/8-16X1.50		
SP43-16-16	SP104-16-16	1.00	1.00	55	2.17	70	2.75	26	1.031	52	2.062	38	1.50	18	.71	25	1.002	1-11 1/2	10	.406	3/8-16	219	3/8-16X1.50		
SP43-20-20	SP104-20-20	1.25	1.25	68	2.68	79	3.12	30	1.188	59	2.312	41	1.61	21	.83	32	1.252	1 1/4-11 1/2	12	.469	7/16-14	222	7/16-14X1.75		
SP43-24-24	SP104-24-24	1.50	1.50	78	3.07	93	3.66	36	1.406	70	2.750	45	1.77	25	.98	38	1.502	1 1/2-11 1/2	13	.531	1/2-13	225	1/2-13X1.75		
SP43-32-32	SP104-32-32	2.00	2.00	90	3.54	102	4.00	43	1.688	78	3.062	45	1.77	25	.98	51	2.002	2-11 1/2	13	.531	1/2-13	228	1/2-13X1.75		
SP43-40-40	SP104-40-40	2.50	2.50	104	4.09	114	4.49	51	2.000	89	3.500	50	1.97	25	.98	64	2.502	2 1/2-8	13	.531	1/2-13	232	1/2-13X1.75		
SP43-48-48	SP104-48-48	3.00	3.00	124	4.88	134	5.28	62	2.438	106	4.188	50	1.97	27	1.06	76	3.002	3-8	17	.656	5/8-11	237	5/8-11X2.00		

Code 61 SAE Straight Thread

Part No. O-Ring Fig. A	Part No. Flat Face Fig. B	Port Size	Pad Size	A		B		C		D		E		F		H		T UN/UNF-2B		K		L UNC-2B		Mounting Hardware	
				mm	in	mm	in	mm	in	mm	in	mm	in	mm	in	mm	in	mm	in	in	mm	in	in	O-Ring	SHCS
SP46-8-8	SP106-8-8	.50	.50	46	1.81	54	2.13	17	.688	38	1.500	36	1.42	16	.63	13	.502	3/4-16	9	.344	5/16-18	210	5/16-18X1.25		
SP46-12-12	SP106-12-12	.75	.75	50	1.97	65	2.56	22	.875	48	1.875	36	1.42	18	.71	19	.752	1 1/16-12	10	.406	3/8-16	214	3/8-16X1.50		
SP46-16-16	SP106-16-16	1.00	1.00	55	2.17	70	2.75	26	1.031	52	2.062	38	1.50	18	.71	25	1.002	1 5/16-12	10	.406	3/8-16	219	3/8-16X1.50		
SP46-20-20	SP106-20-20	1.25	1.25	68	2.68	79	3.12	30	1.188	59	2.312	41	1.61	21	.83	32	1.252	1 5/8-12	12	.469	7/16-14	222	7/16-14X1.7		
SP46-24-24	SP106-24-24	1.50	1.50	78	3.07	93	3.66	36	1.406	70	2.750	45	1.77	25	.98	38	1.502	1 7/8-12	13	.531	1/2-13	225	1/2-13X1.75		
SP46-32-32	SP106-32-32	2.00	2.00	90	3.54	102	4.00	43	1.688	78	3.062	45	1.77	25	.98	51	2.002	2 1/2-12	13	.531	1/2-13	228	1/2-13X1.75		

Specifications

- Carbon Steel Forging
- 6000 PSI (400 bar) SAE Code 62

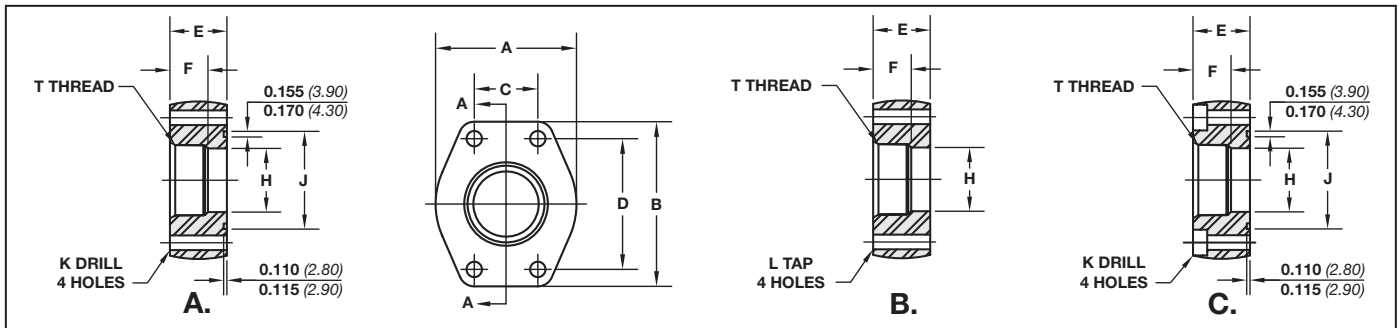
Options

- NPT or SAE Thread
- Standard and Companion Flanges



Dimensions / Ordering Information

Dimensions in mm (inch)



Code 62 NPTF Thread

Part No. O-Ring Fig. A	Part No. Flat Face Fig. B	Port Size	Pad Size	A		B		C		D		E		F		H		T NPTF		K		L UNC-2B		Mounting Hardware	
				mm	in	mm	in	mm	in	mm	in	mm	in	mm	in	mm	in	mm	in	in	mm	in	in	O-Ring	SHCS
SP44-8-8	SP45-8-8	.50	.50	46	1.81	56	2.21	18	.718	40	1.594	36	1.42	16	.63	13	.502	1/2 -14	9	.344	5/16-18	210	5/16-18X1.25		
SP44-12-12	SP45-12-12	.75	.75	55	2.17	71	2.80	24	.937	51	2.000	35	1.38	21	.83	19	.752	3/4 -14	10	.406	3/8-16	214	3/8-16X1.50		
SP44-16-16	SP45-16-16	1.00	1.00	65	2.56	81	3.19	28	1.093	57	2.250	42	1.65	25	.98	25	1.002	1 -11.5	12	.492	7/16-14	219	7/16-14X1.75		
SP44-20-20	SP45-20-20	1.25	1.25	78	3.07	95	3.75	32	1.250	67	2.625	45	1.77	27	1.06	32	1.252	1 1/4 -11.5	13	.531	1/2-13	222	1/2-13X1.75		
SP44-24-24	SP45-24-24	1.50	1.50	94	3.70	112	4.41	36	1.437	79	3.125	50	1.97	30	1.18	38	1.502	1 1/2 -11.5	17	.656	5/8-11	225	5/8-11X2.25		
SP44-32-32	SP45-32-32	2.00	2.00	114	4.50	134	5.28	44	1.750	97	3.812	65	2.56	37	1.46	51	2.002	2 -11.5	20	.781	3/4-10	228	3/4-10X2.75		

Code 62 SAE Straight Thread

Part No. O-Ring Fig. C	Part No. Flat Face Fig. B	Port Size	Pad Size	A		B		C		D		E		F		H		T UN/UNF-2B		K		L UNC-2B		Mounting Hardware	
				mm	in	mm	in	mm	in	mm	in	mm	in	mm	in	mm	in	mm	in	in	mm	in	in	O-Ring	SHCS
SP48-8-8	SP49-8-8	.50	.50	46	1.81	56	2.21	18	.718	40	1.594	36	1.42	16	.63	13	.502	3/4 -16	9	.344	5/16-18	210	5/16-18X1.25		
SP48-12-12	SP49-12-12	.75	.75	55	2.17	71	2.80	24	.937	51	2.000	35	1.38	21	.83	19	.752	1 1/16 -12	10	.406	3/8-16	214	3/8-16X1.50		
SP48-16-16	SP49-16-16	1.00	1.00	65	2.56	81	3.19	28	1.093	57	2.250	42	1.65	25	.98	25	1.002	1 5/16 -12	12	.492	7/16-14	219	7/16-14X1.75		
SP48-20-20	SP49-20-20	1.25	1.25	78	3.07	95	3.75	32	1.250	67	2.625	45	1.77	27	1.06	32	1.252	1 5/8 -12	13	.531	1/2-13	222	1/2-13X1.75		
SP48-24-24	SP49-24-24	1.50	1.50	94	3.70	112	4.41	36	1.437	79	3.125	50	1.97	30	1.18	38	1.502	1 7/8 -12	17	.656	5/8-11	225	5/8-11X2.25		
SP48-32-32	SP49-32-32	2.00	2.00	114	4.50	134	5.28	44	1.750	97	3.812	65	2.56	37	1.46	51	2.002	2 1/2 -12	20	.781	3/4-10	228	3/4-10X2.75		

Specifications

- Carbon Steel Forging
- Socket Tube
- SAE 3000 PSI (200 bar) Code 61 or 6000 PSI (400 bar) Code 62

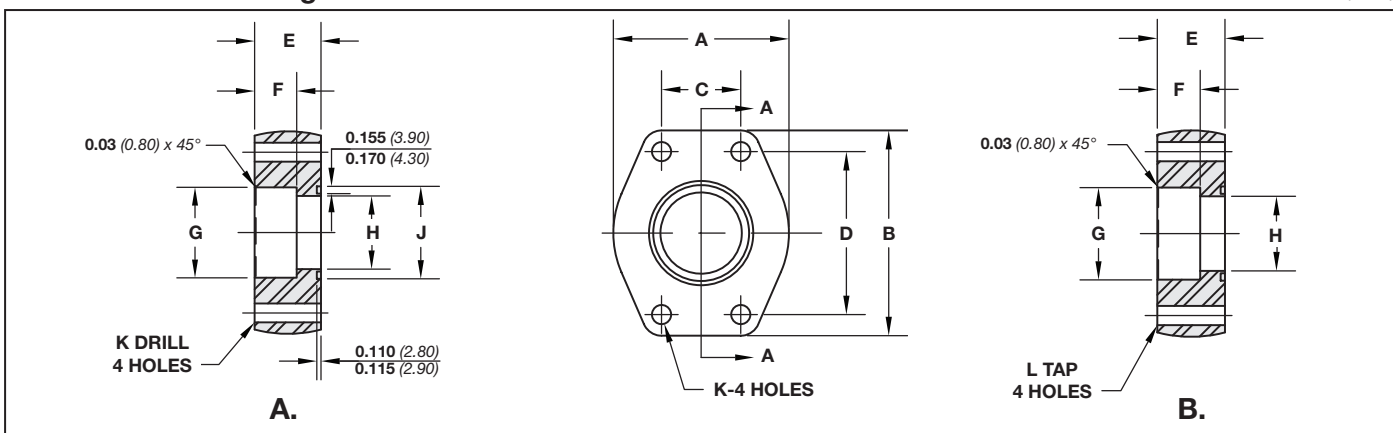
Options

- Standard and Companion Flanges
- Reducing Options Available



Dimensions / Ordering Information

Dimensions in mm (inch)



Code 61 Flat Socket Weld - Tube

Part No. O-Ring Fig. A	Part No. Flat Face Fig. B	Tube Size	Pad Size	A		B		C		D		E		F		G		H		J		K		L UNC-2B		Mounting Hardware	
				mm	in	mm	in	mm	in	mm	in	mm	in	mm	in	mm	in	mm	in	mm	in	mm	in	mm	in	in	O-Ring
SP6-12-12	SP62-12-12	.75	.75	52	2.060	65	2.560	22	.875	48	1.875	19	.750	14	.560	19	.752	16	.625	19	.752	10	.406	3/8-16	214	3/8-16X1.50	
SP6-16-16	SP62-16-16	1.00	1.00	59	2.310	70	2.750	26	1.031	52	2.062	22	.880	16	.630	25	1.002	22	.875	25	1.002	10	.406	3/8-16	219	3/8-16X1.75	
SP6-20-20	SP62-20-20	1.25	1.25	73	2.880	79	3.120	30	1.188	59	2.312	24	.940	18	.690	32	1.252	29	1.125	32	1.252	12	.469	7/16-14	222	7/16-14X1.75	
SP6-24-24	SP62-24-24	1.50	1.50	83	3.250	94	3.690	36	1.406	70	2.750	30	1.190	19	.750	38	1.502	35	1.375	38	1.502	13	.531	1/2-13	225	1/2-13X2.25	
SP6-32-32	SP62-32-32	2.00	2.00	97	3.810	102	4.000	43	1.688	78	3.062	35	1.380	22	.875	51	2.002	48	1.875	51	2.002	13	.531	1/2-13	228	1/2-13X2.50	

Code 62 Flat Socket Weld - Tube

Part No. O-Ring Fig. A	Part No. Flat Face Fig. B	Tube Size	Pad Size	A		B		C		D		E		F		G		H		J		K		L UNC-2B		Mounting Hardware	
				mm	in	mm	in	mm	in	mm	in	mm	in	mm	in	mm	in	mm	in	mm	in	mm	in	mm	in	in	O-Ring
SP58-12-12	SP63-12-12	.75	.75	64	2.50	75	2.95	24	.937	51	2.000	32	1.250	14	.560	19	.752	16	.625	19	.752	10	.406	3/8-16	214	3/8-16X2.00	
SP58-16-16	SP63-16-16	1.00	1.00	70	2.75	81	3.19	28	1.093	57	2.250	38	1.500	16	.630	25	1.002	22	.875	25	1.002	12	.492	7/16-14	219	7/16-14X2.50	
SP58-20-20	SP63-20-20	1.25	1.25	78	3.06	95	3.75	32	1.250	67	2.625	38	1.500	18	.690	32	1.252	29	1.125	32	1.252	13	.531	1/2-13	222	1/2-13X2.50	
SP58-24-24	SP63-24-24	1.50	1.50	95	3.75	113	4.44	36	1.437	79	3.125	44	1.750	19	.750	38	1.502	35	1.375	38	1.502	17	.656	5/8-11	225	5/8-11X3.00	
SP58-32-32	SP63-32-32	2.00	2.00	114	4.50	133	5.25	44	1.750	97	3.812	44	1.750	22	.875	51	2.002	48	1.875	51	2.002	20	.781	3/4-10	228	3/4-10X3.00	

ACCESSORIES

Specifications

- Carbon Steel Forging
- For Socket-Pipe
- Sizes to 5" Pipe

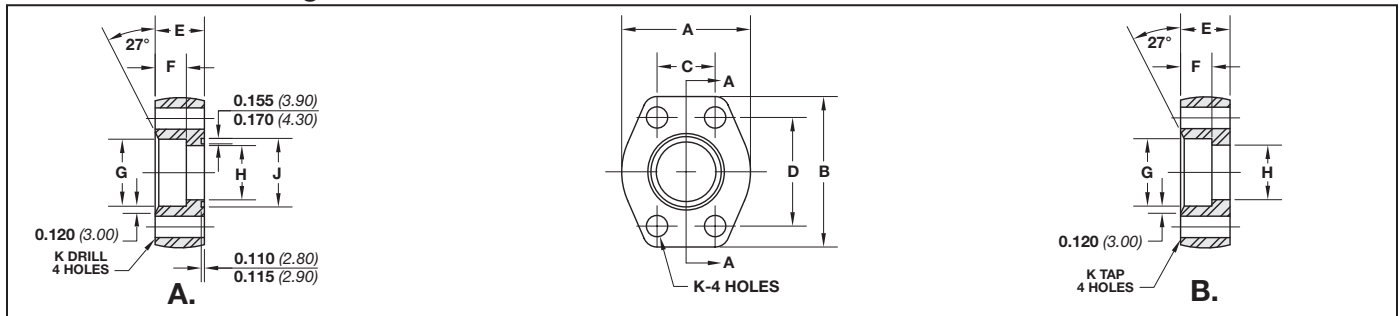
Options

- 3000 PSI (200 Bar) SAE Code 61, or 6000 PSI (400 Bar) SAE Code 62 or 500 PSI (35 Bar)
- Standard and Companions Flanges



Dimensions / Ordering Information

Dimensions in mm (inch)



Code 61 Flat Socket Weld - Pipe

Part No. O-Ring Fig. A	Part No. Flat Face Fig. B	Pipe Size	Pad Size	A		B		C		D		E		F		G		H		J		K		L UNC-2B		Mounting Hardware	
				mm	in	mm	in	mm	in	mm	in	mm	in	mm	in	mm	in	mm	in	mm	in	mm	in	mm	in	mm	in
SP4-8-8	SP61-8-8	.50	.50	46	1.813	54	2.125	17	.688	38	1.500	19	.750	14	.560	22	.855	13	.502	22	.855	9	.344	5/16-18	210	5/16-18X1.50	
SP4-12-12	SP61-12-12	.75	.75	52	2.063	65	2.563	22	.875	48	1.875	19	.750	14	.560	27	1.062	19	.752	27	1.062	10	.406	3/8-16	214	3/8-16X1.50	
SP4-16-16	SP61-16-16	1.00	1.00	59	2.313	70	2.750	26	1.031	52	2.063	22	.880	16	.630	34	1.326	25	1.002	34	1.326	10	.406	3/8-16	219	3/8-16X1.75	
SP4-20-20	SP61-20-20	1.25	1.25	73	2.875	79	3.125	30	1.188	59	2.313	24	.940	18	.690	42	1.672	32	1.252	42	1.672	12	.469	7/16-14	222	7/16-14X1.75	
SP4-24-24	SP61-24-24	1.50	1.50	83	3.250	94	3.688	38	1.406	70	2.750	30	1.190	19	.750	49	1.922	38	1.502	49	1.922	13	.531	1/2-13	225	1/2-13X2.25	
SP4-32-32	SP61-32-32	2.00	2.00	97	3.813	102	4.000	43	1.688	78	3.063	35	1.380	22	.875	61	2.406	50	2.002	61	2.406	13	.531	1/2-13	228	1/2-13X2.50	
SP4-40-40	SP61-40-40	2.50	2.50	109	4.281	114	4.500	51	2.000	89	3.500	44	1.750	25	1.000	74	2.906	64	2.502	74	2.906	13	.531	1/2-13	232	1/2-13X2.75	
SP4-48-48	SP61-48-48	3.00	3.00	131	5.156	135	5.313	62	2.438	106	4.188	54	2.120	32	1.250	90	3.547	76	3.002	90	3.547	17	.656	5/8-11	237	5/8-11X3.50	

Code 62 Flat Socket Weld - Pipe

Part No. O-Ring Fig. A	Part No. Flat Face Fig. B	Pipe Size	Pad Size	A		B		C		D		E		F		G		H		J		K		L UNC-2B		Mounting Hardware	
				mm	in	mm	in	mm	in	mm	in	mm	in	mm	in	mm	in	mm	in	mm	in	mm	in	mm	in	mm	in
SP59-8-8	SP60-8-8	.50	.50	49	1.94	58	2.30	18	.718	40	1.594	32	1.250	14	.560	22	.855	13	.502	22	.855	9	.344	5/16-18	210	5/16-18X2.00	
SP59-12-12	SP60-12-12	.75	.75	64	2.50	75	2.95	24	.937	51	2.000	32	1.250	14	.560	27	1.062	19	.752	27	1.062	10	.406	3/8-16	214	3/8-16X2.00	
SP59-16-16	SP60-16-16	1.00	1.00	70	2.75	81	3.19	28	1.093	64	2.250	38	1.500	16	.630	34	1.326	25	1.002	34	1.326	12	.492	7/16-14	219	7/16-14X2.50	
SP59-20-20	SP60-20-20	1.25	1.25	78	3.06	95	3.75	31	1.250	67	2.625	38	1.500	18	.690	42	1.672	32	1.252	42	1.672	13	.531	1/2-13	222	1/2-13X2.50	
SP59-24-24	SP60-24-24	1.50	1.50	95	3.75	113	4.44	36	1.437	79	3.125	44	1.750	19	.750	49	1.922	38	1.502	49	1.922	17	.656	5/8-11	225	5/8-11X3.00	
SP59-32-32	SP60-32-32	2.00	2.00	114	4.50	133	5.25	44	1.750	97	3.812	44	1.750	22	.875	61	2.406	50	2.002	61	2.406	20	.781	3/4-10	228	3/4-10X3.00	
SP59-40-40	SP60-40-40	2.50	2.50	149	5.87	174	6.87	59	2.312	124	4.875	52	2.060	25	1.000	74	2.906	64	2.502	74	2.906	23	.906	7/8-9	232	7/8-9X3.50	
SP59-48-48	SP60-48-48	3.00	3.00	178	7.00	216	8.50	71	2.812	152	6.000	67	2.620	32	1.250	90	3.547	76	3.002	90	3.547	30	1.190	1 1/4 -7	237	1 1/4 -7X4.50	

500 PSI Flat Socket Weld - Pipe

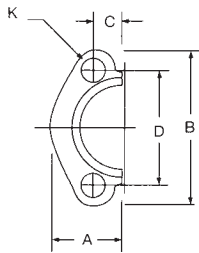
Part No. O-Ring Fig. A	Part No. Flat Face Fig. B	Pipe Size	Pad Size	A		B		C		D		E		F		G		H		J		K		L UNC-2B		Mounting Hardware	
				mm	in	mm	in	mm	in	mm	in	mm	in	mm	in	mm	in	mm	in	mm	in	mm	in	mm	in	mm	in
SP72-48-48	SP91-48-48	3.00	3.00	130	5.12	135	5.31	62	2.438	106	4.188	35	1.380	28	1.120	90	3.547	76	3.002	90	3.547	17	.656	5/8-11	237	5/8-11X3.00	
SP72-56-56	SP91-56-56	3.50	3.50	140	5.50	152	6.00	70	2.750	121	4.750	37	1.440	30	1.190	103	4.047	89	3.502	103	4.047	17	.656	5/8-11	241	5/8-11X3.00	
SP72-64-64	SP91-64-64	4.00	4.00	152	6.00	162	6.38	78	3.062	130	5.125	38	1.500	32	1.250	116	4.578	102	4.002	116	4.578	17	.656	5/8-11	245	5/8-11X3.00	
SP72-80-80	SP91-80-80	5.00	5.00	181	7.12	184	7.25	92	3.625	152	6.000	44	1.750	35	1.380	143	5.641	127	5.002	143	5.641	17	.656	5/8-11	253	5/8-11X3.00	

Specifications

- Carbon Steel Forging
- Includes Bolts, Washers, and O-Rings
- 3000 PSI (200 Bar) Code 61 or 6000 PSI (400 Bar) Code 62

Options

- Complete kits or loose flange halves available



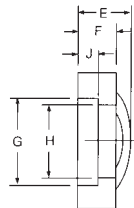
Dimensions / Ordering Information

Code 61 Split Flange Kits (Kits include Flanges, Bolts, Washers and O-rings)																							
Part No.	Flange Size	A		B		C		D		E		F		G		H		J		K		Working Press Max.	O-ring Dash #
		mm	in	mm	in	mm	in	mm	in	mm	in	mm	in	mm	in	mm	in	mm	in	mm	in		
SF3-12	.75	25	.98	65	2.56	11	.438	48	1.875	22	.88	14	.56	39	1.531	32	1.265	6	.245	10	.406	5000	-214
SF3-16	1.00	28	1.11	70	2.75	13	.515	52	2.062	24	.94	16	.62	45	1.781	38	1.515	7	.295	10	.406	5000	-219
SF3-20	1.25	35	1.39	79	3.12	15	.594	59	2.312	22	.88	16	.62	52	2.031	44	1.720	7	.295	12	.469	4000	-222
SF3-24	1.50	40	1.58	93	3.69	18	.703	70	2.750	25	1.00	14	.56	61	2.406	51	2.000	7	.295	13	.531	3000	-225
SF3-32	2.00	47	1.86	102	4.00	21	.844	78	3.062	26	1.03	16	.62	72	2.844	63	2.470	9	.355	13	.531	3000	-228
SF3-40	2.50	53	2.09	114	4.50	25	1.000	89	3.500	38	1.50	19	.75	85	3.344	75	2.950	9	.355	13	.531	2500	-232
SF3-48	3.00	64	2.53	135	5.31	31	1.219	106	4.188	41	1.62	22	.88	102	4.031	91	3.580	9	.355	16	.656	2000	-237

Note: "Flange Pairs" can be ordered without hardware; specify "no hardware".

Code 61 Split Flange (Individual Half Only)																							
Part No.	Flange Size	A		B		C		D		E		F		G		H		J		K		Working Press Max.	O-ring Dash #
		mm	in	mm	in	mm	in	mm	in	mm	in	mm	in	mm	in	mm	in	mm	in	mm	in		
PSF3-12	.75	25	.98	65	2.56	11	.438	48	1.875	22	.88	14	.56	39	1.531	32	1.265	6	.245	10	.406	5000	-214
PSF3-16	1.00	28	1.11	70	2.75	13	.515	52	2.062	24	.94	16	.62	45	1.781	38	1.515	7	.295	10	.406	5000	-219
PSF3-20	1.25	35	1.39	79	3.12	15	.594	59	2.312	22	.88	16	.62	52	2.031	44	1.720	7	.295	12	.469	4000	-222
PSF3-24	1.50	40	1.58	93	3.69	18	.703	70	2.750	25	1.00	14	.56	61	2.406	51	2.000	7	.295	13	.531	3000	-225
PSF3-32	2.00	47	1.86	102	4.00	21	.844	78	3.062	26	1.03	16	.62	72	2.844	63	2.470	9	.355	13	.531	3000	-228
PSF3-40	2.50	53	2.09	114	4.50	25	1.000	89	3.500	38	1.50	19	.75	85	3.344	75	2.950	9	.355	13	.531	2500	-232
PSF3-48	3.00	64	2.53	135	5.31	31	1.219	106	4.188	41	1.62	22	.88	102	4.031	91	3.580	9	.355	16	.656	2000	-237

Note: "Flange Pairs" can be ordered without hardware; specify "no hardware".

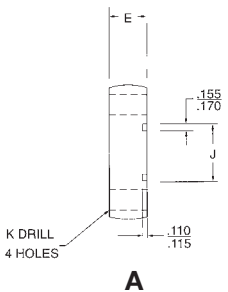


Code 62 Split Flange Kits (Kits include Flanges, Bolts, Washers and O-rings)																							
Part No.	Flange Size	A		B		C		D		E		F		G		H		J		K		Working Press Max.	O-ring Dash #
		mm	in	mm	in	mm	in	mm	in	mm	in	mm	in	mm	in	mm	in	mm	in	mm	in		
SF6-12	.75	29	1.14	71	2.81	12	.469	51	2.000	28	1.12	19	.75	42	1.656	32	1.280	8	.325	10	.406	6000	-214
SF6-16	1.00	34	1.33	81	3.19	14	.547	57	2.250	33	1.31	24	.94	48	1.906	38	1.530	9	.355	12	.469	6000	-219
SF6-20	1.25	38	1.48	95	3.75	16	.625	67	2.625	38	1.50	27	1.06	55	2.156	44	1.750	10	.385	13	.531	6000	-222
SF6-24	1.50	46	1.83	113	4.44	18	.719	79	3.125	43	1.69	30	1.19	64	2.531	51	2.030	12	.475	17	.656	6000	-225
SF6-32	2.00	56	2.20	133	5.25	22	.875	97	3.812	52	2.06	37	1.44	80	3.156	63	2.660	12	.475	20	.781	6000	-228

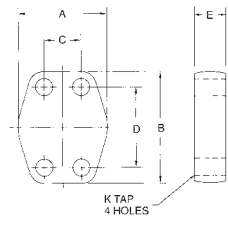
Code 62 Split Flange Kits (Individual Half Only)																							
Part No.	Flange Size	A		B		C		D		E		F		G		H		J		K		Working Press Max.	O-ring Dash #
		mm	in	mm	in	mm	in	mm	in	mm	in	mm	in	mm	in	mm	in	mm	in	mm	in		
PSF6-12	.75	29	1.14	71	2.81	12	.469	51	2.000	28	1.12	19	.75	42	1.656	32	1.280	8	.325	10	.406	6000	-214
PSF6-16	1.00	34	1.33	81	3.19	14	.547	57	2.250	33	1.31	24	.94	48	1.906	38	1.530	9	.355	12	.469	6000	-219
PSF6-20	1.25	38	1.48	95	3.75	16	.625	67	2.625	38	1.50	27	1.06	55	2.156	44	1.750	10	.385	13	.531	6000	-222
PSF6-24	1.50	46	1.83	113	4.44	18	.719	79	3.125	43	1.69	30	1.19	64	2.531	51	2.030	12	.475	17	.656	6000	-225
PSF6-32	2.00	56	2.20	133	5.25	22	.875	97	3.812	52	2.06	37	1.44	80	3.156	63	2.660	12	.475	20	.781	6000	-228

3000 PSI Blanking Flange																						
O-Ring Part No. Fig. A	Flat Face Part No. Fig. B	Pad Size	A		B		C		D		E		J Min		J Max		K Drill Dia.		K Tap UN-2B		O-Ring Dash #	
			mm	in	mm	in	mm	in	mm	in	mm	in	mm	in	mm	in	mm	in	mm	in		
SP36-12-12	SP37-12-12	.750	52	2.063	65	2.563	22	.875	48	1.875	19	.750	32	1.250	32	1.255	10	.406	3/8-16	-214		
SP36-16-16	SP37-16-16	1.000	59	2.313	70	2.750	26	1.031	52	2.063	22	.880	40	1.560	40	1.565	10	.406	3/8-16	-219		
SP36-20-20	SP37-20-20	1.250	73	2.875	79	3.125	30	1.188	59	2.312	24	.940	45	1.755	45	1.755	12	.469	7/16-14	-222		
SP36-24-24	SP37-24-24	1.500	83	3.250	94	3.688	36	1.406	70	2.750	30	1.190	54	2.115	54	2.125	13	.531	1/2-13	-225		
SP36-32-32	SP37-32-32	2.000	97	3.813	102	4.000	43	1.688	78	3.063	35	1.380	63	2.490	64	2.500	13	.531	1/2-13	-228		
SF36-40-40	SP37-40-40	2.500	109	4.281	114	4.500	51	2.000	89	3.500	44	1.750	76	2.995	76	3.005	13	.531	1/2-13	-232		
SF36-48-48	SP37-48-48	3.000	131	5.156	135	5.313	62	2.438	106	4.188	54	2.120	92	3.615	92	3.625	17	.656	5/8-11	-237		

6000 PSI Blanking Flange																						
O-Ring Part No. Fig. A	Flat Face Part No. Fig. B	Pad Size	A		B		C		D		E		J Min		J Max		K Drill Dia.		K Tap UN-2B		O-Ring Dash #	
			mm	in	mm	in	mm	in	mm	in	mm	in	mm	in	mm	in	mm	in	mm	in		
SP38-12-12	SP39-12-12	.750	60	2.380	71	2.810	24	.937	51	2.000	32	1.250	32	1.250	32	1.255	10	.406	3/8-16	-214		
SP38-16-16	SP39-16-16	1.000	70	2.750	81	3.190	28	1.093	57	2.250	38	1.500	40	1.560	40	1.565	12	.469	7/16-14	-219		
SP38-20-20	SP39-20-20	1.250	78	3.060	95	3.750	32	1.250	67	2.625	38	1.500	45	1.755	45	1.755	13	.531	1/2-13	-222		
SP38-24-24	SP39-24-24	1.500	95	3.750	113	4.440	36	1.437	79	3.125	44	1.750	54	2.115	54	2.125	17	.656	5/8-11	-225		
SP38-32-32	SP39-32-32	2.000	114	4.500	133	5.250	44	1.750	97	3.812	44	1.750	63	2.490	64	2.500	20	.781	3/4-10	-228		



A



B