

Specifications

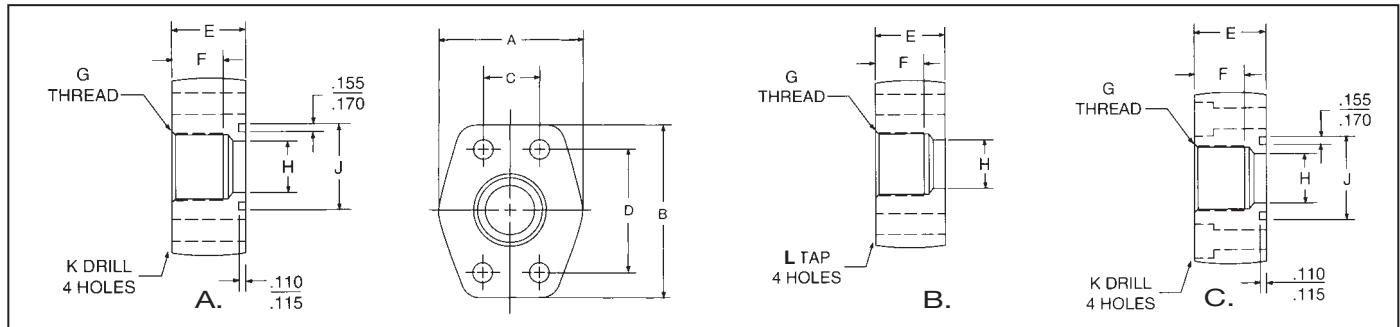
- Carbon Steel Forging
- 6000 PSI (400 bar) SAE Code 62

Options

- NPT or SAE Thread
- Standard and Companion Flanges



Dimensions / Ordering Information



Code 62 NPTF Thread

Part No. O-Ring Fig. A	Part No. Flat Face Fig. B	Port Size	Pad Size	A		B		C		D		E		F		G		H		J NPTF	K		L UNC-2B		Mounting Hardware	
				mm	in	mm	in	mm	in	mm	in	mm	in	mm	in	mm	in	mm	in	mm	in	in	mm	in	in	O-Ring
SP44-8-8	SP45-8-8	.50	.50	46	1.81	56	2.21	18	.718	40	1.594	36	1.42	16	.63	25	1.000	13	.502	1/2-14	9	.344	5/16-18	210	5/16-18X1.25	
SP44-12-12	SP45-12-12	.75	.75	55	2.17	71	2.80	24	.937	51	2.000	35	1.38	21	.83	32	1.250	19	.752	3/4-14	10	.406	3/8-16	214	3/8-16X1.50	
SP44-16-16	SP45-16-16	1.00	1.00	65	2.56	81	3.19	28	1.093	57	2.250	42	1.65	25	.98	40	1.560	25	1.002	1-11.5	12	.492	7/16-14	219	7/16-14X1.75	
SP44-20-20	SP45-20-20	1.25	1.25	78	3.07	95	3.75	32	1.250	67	2.625	45	1.77	27	1.06	44	1.750	32	1.252	1 1/4-11.5	13	.531	1/2-13	222	1/2-13X1.75	
SP44-24-24	SP45-24-24	1.50	1.50	94	3.70	112	4.41	36	1.437	79	3.125	50	1.97	30	1.18	54	2.115	38	1.502	1 1/2-11.5	17	.656	5/8-11	225	5/8-11X2.25	
SP44-32-32	SP45-32-32	2.00	2.00	114	4.50	134	5.28	44	1.750	97	3.812	65	2.56	37	1.46	63	2.490	51	2.002	2-11.5	20	.781	3/4-10	228	3/4-10X2.75	

Code 62 SAE Straight Thread

Part No. O-Ring Fig. C	Part No. Flat Face Fig. B	Port Size	Pad Size	A		B		C		D		E		F		G		H		J UN/UNF-2B	K		L UNC-2B		Mounting Hardware	
				mm	in	mm	in	mm	in	mm	in	mm	in	mm	in	mm	in	mm	in	mm	in	in	mm	in	in	O-Ring
SP48-8-8	SP49-8-8	.50	.50	46	1.81	56	2.21	18	.718	40	1.594	36	1.42	16	.63	25	1.000	13	.502	3/4-16	9	.344	5/16-18	210	5/16-18X1.25	
SP48-12-12	SP49-12-12	.75	.75	55	2.17	71	2.80	24	.937	51	2.000	35	1.38	21	.83	32	1.250	19	.752	1 1/16-12	10	.406	3/8-16	214	3/8-16X1.50	
SP48-16-16	SP49-16-16	1.00	1.00	65	2.56	81	3.19	28	1.093	57	2.250	42	1.65	25	.98	40	1.560	25	1.002	1 5/16-12	12	.492	7/16-14	219	7/16-14X1.75	
SP48-20-20	SP49-20-20	1.25	1.25	78	3.07	95	3.75	32	1.250	67	2.625	45	1.77	27	1.06	44	1.750	32	1.252	1 3/8-12	13	.531	1/2-13	222	1/2-13X1.75	
SP48-24-24	SP49-24-24	1.50	1.50	94	3.70	112	4.41	36	1.437	79	3.125	50	1.97	30	1.18	54	2.115	38	1.502	1 7/8-12	17	.656	5/8-11	225	5/8-11X2.25	
SP48-32-32	SP49-32-32	2.00	2.00	114	4.50	134	5.28	44	1.750	97	3.812	65	2.56	37	1.46	63	2.490	51	2.002	2 1/2-12	20	.781	3/4-10	228	3/4-10X2.75	