

Specifications

- Carbon Steel Forging
- 3000 PSI (200 bar) SAE Code 61

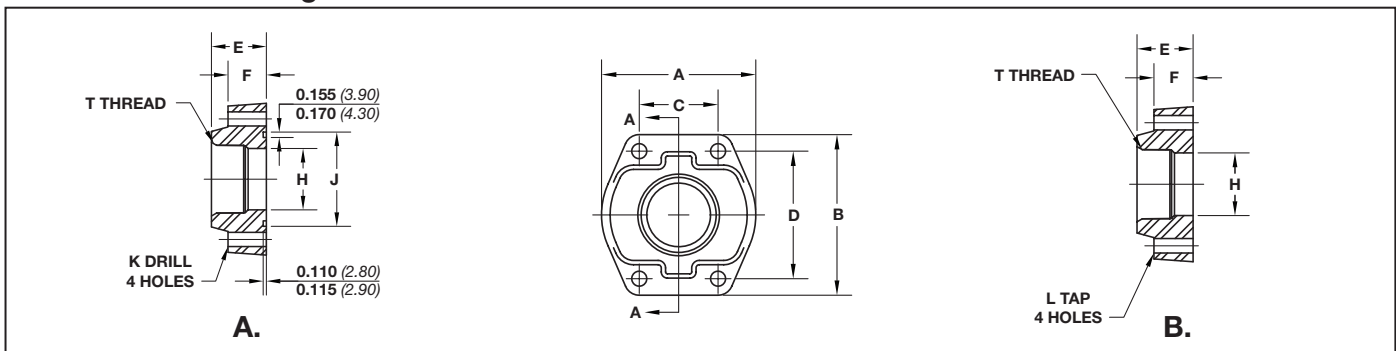
Options

- NPT or SAE Thread
- Standard and Companion Flanges
- Reducing Options Available.



Dimensions / Ordering Information

Dimensions in mm (inch)



Code 61 NPTF Thread

Part No. O-Ring Fig. A	Part No. Flat Face Fig. B	Port Size	Pad Size	A		B		C		D		E		F		H		T NPTF		K		L UNC-2B		Mounting Hardware	
				mm	in	mm	in	mm	in	mm	in	mm	in	mm	in	mm	in	mm	in	in	mm	in	in	O-Ring	SHCS
SP43-8-8	SP104-8-8	.50	.50	46	1.81	54	2.13	17	.688	38	1.500	36	1.42	16	.63	13	.502	1/2-14	9	.344	5/16-18	210	5/16-18X1.25		
SP43-12-12	SP104-12-12	.75	.75	50	1.97	65	2.56	22	.875	48	1.875	36	1.42	18	.71	19	.752	3/4-14	10	.406	3/8-16	214	3/8-16X1.50		
SP43-16-16	SP104-16-16	1.00	1.00	55	2.17	70	2.75	26	1.031	52	2.062	38	1.50	18	.71	25	1.002	1-11 1/2	10	.406	3/8-16	219	3/8-16X1.50		
SP43-20-20	SP104-20-20	1.25	1.25	68	2.68	79	3.12	30	1.188	59	2.312	41	1.61	21	.83	32	1.252	1 1/4-11 1/2	12	.469	7/16-14	222	7/16-14X1.75		
SP43-24-24	SP104-24-24	1.50	1.50	78	3.07	93	3.66	36	1.406	70	2.750	45	1.77	25	.98	38	1.502	1 1/2-11 1/2	13	.531	1/2-13	225	1/2-13X1.75		
SP43-32-32	SP104-32-32	2.00	2.00	90	3.54	102	4.00	43	1.688	78	3.062	45	1.77	25	.98	51	2.002	2-11 1/2	13	.531	1/2-13	228	1/2-13X1.75		
SP43-40-40	SP104-40-40	2.50	2.50	104	4.09	114	4.49	51	2.000	89	3.500	50	1.97	25	.98	64	2.502	2 1/2-8	13	.531	1/2-13	232	1/2-13X1.75		
SP43-48-48	SP104-48-48	3.00	3.00	124	4.88	134	5.28	62	2.438	106	4.188	50	1.97	27	1.06	76	3.002	3-8	17	.656	5/8-11	237	5/8-11X2.00		

Code 61 SAE Straight Thread

Part No. O-Ring Fig. A	Part No. Flat Face Fig. B	Port Size	Pad Size	A		B		C		D		E		F		H		T UN/UNF-2B		K		L UNC-2B		Mounting Hardware	
				mm	in	mm	in	mm	in	mm	in	mm	in	mm	in	mm	in	mm	in	in	mm	in	in	O-Ring	SHCS
SP46-8-8	SP106-8-8	.50	.50	46	1.81	54	2.13	17	.688	38	1.500	36	1.42	16	.63	13	.502	3/4-16	9	.344	5/16-18	210	5/16-18X1.25		
SP46-12-12	SP106-12-12	.75	.75	50	1.97	65	2.56	22	.875	48	1.875	36	1.42	18	.71	19	.752	1 1/16-12	10	.406	3/8-16	214	3/8-16X1.50		
SP46-16-16	SP106-16-16	1.00	1.00	55	2.17	70	2.75	26	1.031	52	2.062	38	1.50	18	.71	25	1.002	1 5/16-12	10	.406	3/8-16	219	3/8-16X1.50		
SP46-20-20	SP106-20-20	1.25	1.25	68	2.68	79	3.12	30	1.188	59	2.312	41	1.61	21	.83	32	1.252	1 5/8-12	12	.469	7/16-14	222	7/16-14X1.7		
SP46-24-24	SP106-24-24	1.50	1.50	78	3.07	93	3.66	36	1.406	70	2.750	45	1.77	25	.98	38	1.502	1 7/8-12	13	.531	1/2-13	225	1/2-13X1.75		
SP46-32-32	SP106-32-32	2.00	2.00	90	3.54	102	4.00	43	1.688	78	3.062	45	1.77	25	.98	51	2.002	2 1/2-12	13	.531	1/2-13	228	1/2-13X1.75		